

# Beamforming technology



Successfully pass the free certification exam at IW Academy and become an Infinet Certified Engineer.

[To the certification exam](#)

- [Introduction](#)
- [Communication systems without beamforming technology](#)
- [Beamforming technology](#)
  - [Description](#)
  - [The beamforming technology advantages](#)
  - [Implementation](#)
  - [Implementation in the Infinet devices](#)
  - [Additional application scenarios for beamforming technology](#)
- [Additional documents](#)

## Introduction

The wireless broadband access systems wide spread has caused a number of problems that impede the efficient operation of the existing systems and the scaling of the wireless networks. Within this article two main problems will be reviewed:

- **High interference** - the influence of third-party wireless data transmission systems that use the same frequency channels.
- **Inefficient use of the input power** - often the input power is used inefficiently due to the antenna's weak directional properties. This factor also leads to interference.

## Communication systems without beamforming technology

The antenna's radiation pattern without beamforming technology support is fixed and cannot be changed during data transfer. An example of a base station sector with three subscriber devices is shown in video 1.

The base station sector consistently exchanges data with the subscriber devices bidirectionally: the base station transmits data for the first subscriber, waiting for a response from it, then performs data exchange with the third and second subscribers. Downlink messages transmitted from the base station to a subscriber are received by all the subscriber devices, regardless of the recipient, i.e. the message sent to the subscriber device 1, will be received by subscriber devices 2 and 3, but will not be processed.

Your browser does not support the HTML5 video element

*Video 1 - System without a beamforming technology operation*

This approach has several disadvantages:

- Inefficient use of the radiated power (the sector performs data transmission to all subscriber devices that are within the coverage area, regardless of the recipient device), i.e. the link power with a specific subscriber unit can be higher.
- Low security level (by gaining access to one of the subscriber devices, the attacker can intercept the whole outgoing traffic of the sector for all subscribers).
- The appearance of local interference on the sector affects the operation of all the subscriber devices that are connected to this sector.

Video 2 shows the operation of the base station sector with three subscribers, under local interference conditions. At time intervals allocated for uplink data transmission, the sector receives the sum of the subscriber signal and interference. In case of a high interference level, the sector cannot separate the useful subscriber component from the sum of received signals and the data transmission must be repeated. It will take extra time, i.e. system resources will be used inefficiently. Note that the interference signal in the sector coverage area affects the operation of all subscribers, since the wide radiation pattern main lobe does not allow selective spatial suppression. In other words, any signal into the main lobe of the sector radiation pattern will influence the entire system operation.

Your browser does not support the HTML5 video element

*Video 2 - A local interference influence on a sector without beamforming technology.*

## Beamforming technology

### Description

The outlined problems can be solved by using antennas that support the beamforming technology.

The beamforming technology is the ability to control the antenna's radiation pattern, i.e. depending on the situation, the antenna narrows the radiation pattern main lobe and orients it in the required direction. Thus each subscriber will benefit of its own directional radiation pattern and an individual configuration will be used for data transmission to this subscriber. Note that the selected radiation pattern will be used for bidirectional exchange, i.e. both for reception and transmission.

An example with three subscribers connected to the same sector with beamforming technology is shown in video 3. Compared to a conventional antenna, the antenna's radiation pattern has become narrower and the main lobe is oriented towards the subscriber unit.

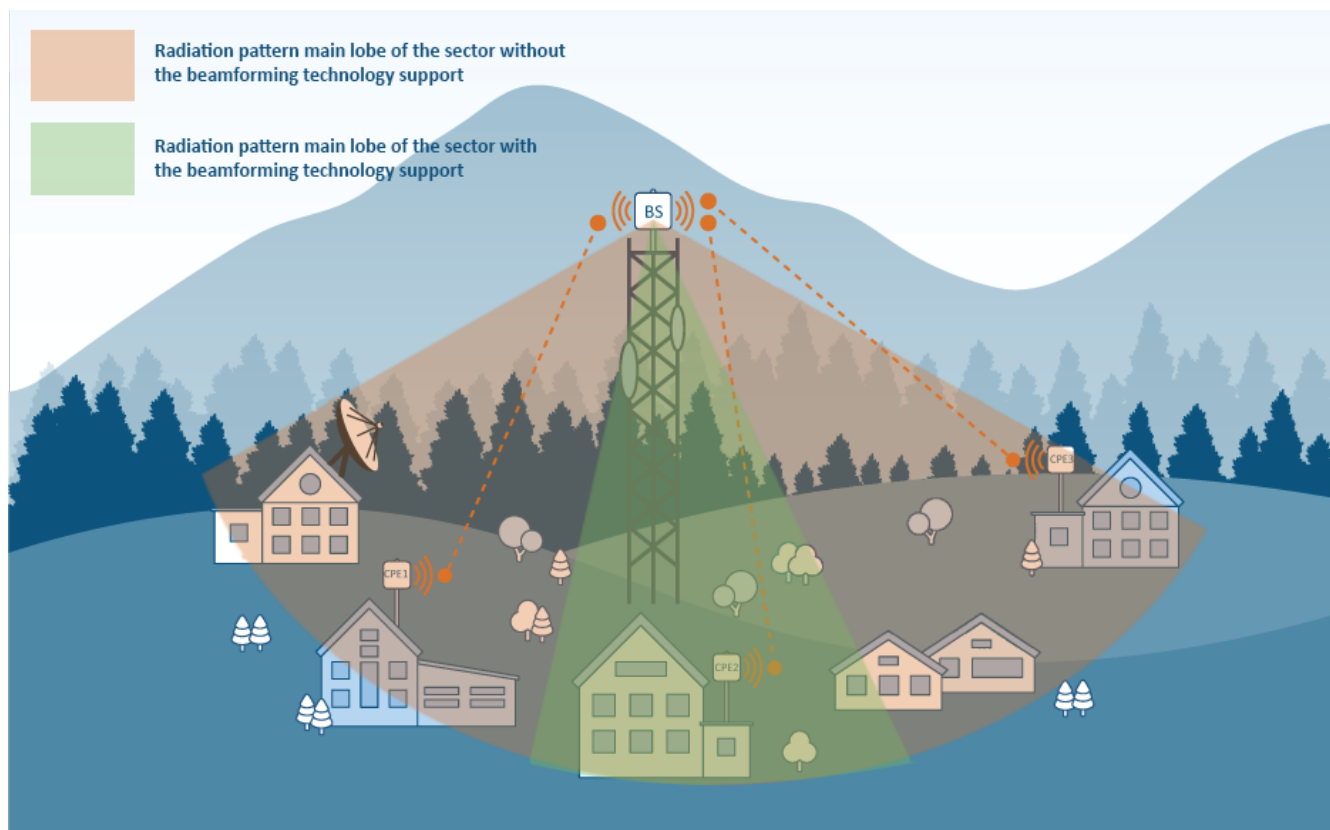
Your browser does not support the HTML5 video element

*Video 3 - An example of sector with beamforming*

## The beamforming technology advantages

The advantages of using devices with the beamforming technology support:

- The link energy increase. Figure 1 shows a comparison of the antenna's radiation pattern with and without beamforming support. Note that the radiation power of the device has not changed, and due to the fact that the energy supplied to the antenna is radiated only in the direction of a particular subscriber, the received signal level at the subscriber device increases significantly. A similar effect appears in the uplink as well. This advantage leads to the following benefits:
  - a. **Improved performance** (subscribers performing data transmission not on the maximum bitrate, it can use higher modulation-code schemes to increase the bandwidth of the link, due to an increase in the signal-to-noise ratio).
  - b. **Longer device lifetime** (due to the link energy increase, the radiation power can be reduced without affecting the performance, leading to the increase of the device's radio transmitter lifetime).
  - c. **Sector coverage range increase** (higher link energy allows connection of new subscriber devices located at greater distances from the sector).



*Figure 1 - Radiation pattern of the sector with the beamforming technology support and without it*

- Improved directional properties of the antenna. Allows to increase security by reducing the risks of all sector's subscribers data interception. In case of beamforming technology support, the data transmission is performed only in the subscriber direction, therefore if an attacker performs similar actions, he will be able to access only the data of one subscriber.

- The ability to select the radiation direction automatically, reduces the requirements for the alignment and allows to determine the azimuth of the subscriber location, which can be useful in some scenarios (ex. with mobile objects).
- Using the BS sector with beamforming antenna reduces the local interference influence. Video 4 shows the interference effect in case of beamforming antenna usage. The noise falls into the side lobe of the radiation pattern, when the second and third subscribers are servicing, and does not have a significant effect on the useful signal. Since the data transmission direction to the first subscriber and the interference source coincide, the use of beamforming technology does not allow to reduce the local interference influence for this device. Although the beamforming technology support does not allow to completely neutralize the influence of interferences, its use can significantly improve the performance and reliability of the communication in some scenarios.

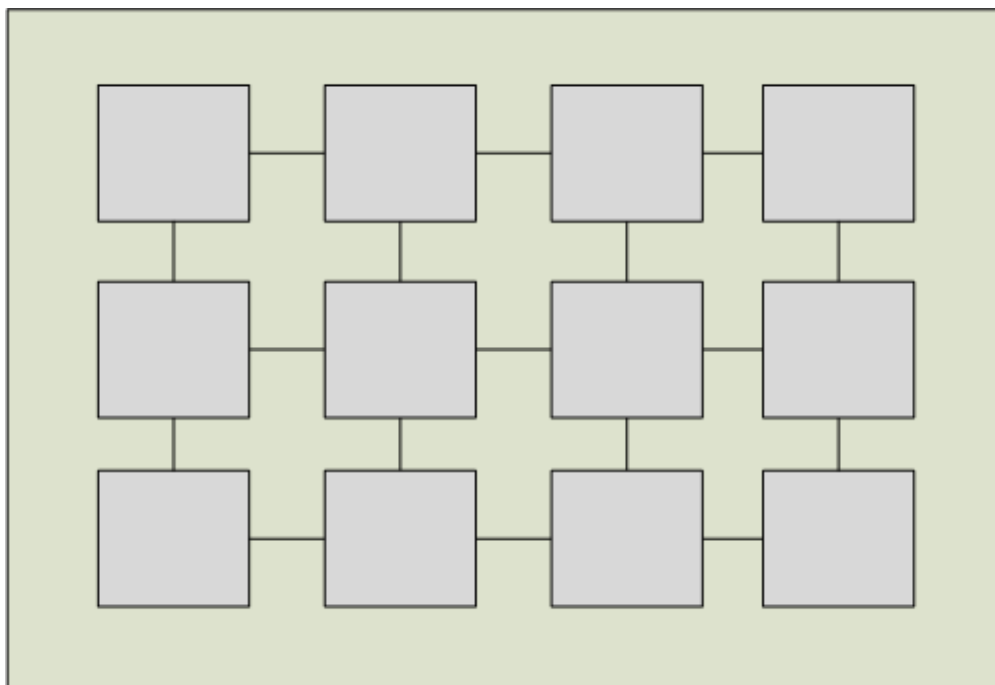
Your browser does not support the HTML5 video element

*Video 4 - An example of the local interference effect on sector with beamforming technology*

## Implementation

Modern devices have several emitters. One of the structures used in modern radio communications is the phased antenna array (see Figure 2), which is a matrix of conducting elements. Their shape and relative position determine the frequency range and directional properties of the antenna.

A copy of the modulated signal from the radio module is supplied to each antenna element. In addition to the antenna array design, the radiation pattern is determined by the signal's characteristics from each of the radiating elements: by default, the signals are in-phase, but by intentionally introducing a phase delay, the shape and direction of the main lobe can be changed.



*Figure 2 - An example of a phased array antenna layout*

The effect described above is used in devices with beamforming technology. The approach on how the radiation pattern control is performed, divides such devices into two large groups:

- Devices with a set of radiation pattern templates (devices have several radiation pattern templates in the memory that usually modify the azimuth of the main lobe. The interaction with a specific subscriber device implies using one of the templates, which is best suited for a given location. The disadvantage of this approach is that the final set of patterns does not always allow to choose the most efficient radiation pattern for the subscriber device).
- Devices without radiation pattern templates (in accordance to the signal received from the subscriber, the device generates an individual radiation pattern, using one of the embedded algorithms. The disadvantage of this approach is the high computing resources requirements).

## Implementation in the InfiNet devices

In the InfiNet company's product portfolio, the beamforming technology is implemented in the [R5000-Qmxb](#) base station sector models of the InfiMAN 2x2 point-to-multipoint family and [E5-BSQ](#) base station sector models of the InfiMAN Evolution family.

R5000-Qmxb and E5-BSQ devices integrated antennas includes 15 built-in templates of the radiation pattern with a main lobe width of 20° (gain 21 dBi) located with an offset of 5° from each other and one template with a lobe width of 90° (gain 15 dBi). Depending on the chosen template, the device can operate in two modes:

- **Broadcast mode** - using the radiation pattern with a main lobe width of 90°. This mode is used to exchange service information, when the narrow, focused templates are not yet assigned or when it is necessary to update the data on the selected template.
- **Directional mode** — using one of the 15 radiation pattern templates with a main lobe width of 20°. This mode is used for direct data transfer.

Video 5 demonstrates the establishing of correspondence between the subscriber station and the radiation pattern template. The base station sector broadcasts requests addressed to all subscribers, using every narrow directional templates in turn. The request contains information about the template number. The subscriber estimates the level of each received signal, selects the maximum and sends the template number to the sector. After receiving information from the subscriber, the sector fills in the correspondence table and uses a template from the generated table, to interact with a specific client device. During operation the sector initiates the update of the correspondence table, adapting to possible changes in the external environment.

Your browser does not support the HTML5 video element

*Video 5 - Template selection mechanism for subscriber device*

The migration to a system with beamforming technology support is not laborious - it is enough to perform the base station sector replacement, the configuration of the previous device is compatible with new sector, the beamforming technology does not need any additional settings and is performed transparently for users and network administrators. There is no need to replace subscriber devices - the devices are compatible with each other. However, there are two limitations to deal with:

- The power consumption of the devices with beamforming technology support is higher than for devices without it, therefore, IDU-BS-G (60W) power supplies are used to power the R5000-Qmxb and E5-BSQ devices.
- R5000-Qmxb and E5-BSQ devices can only use a software version with TDMA technology (the differences between the two types of software are described in the [TDMA and Polling: Application features](#) article). Software with Polling technology support can be upgraded to software with TDMA technology support according to the [instruction](#). In case of adjacent sectors, for example, in the implementation of the ABAB scheme, it is recommended to use the [AUX-ODU-SYNC](#) synchronization device.

### Additional application scenarios for beamforming technology

The above described beamforming technology advantages can be used in mobile wireless communication systems. The mobility of the subscriber or of the base station has a strong influence on the link parameters, which can be neutralized by using devices with beamforming technology. The radiation pattern of such devices will adapt to changes in the external environment, trying to keep the link radio parameters at the maximum level.

Note that the implementation of such projects is a complex task that requires an unconventional approach and ingenuity. A possible solution is to use devices with beamforming technology on the client side, or both on the subscriber side and on the base station side.

### Additional documents

1. [Wireless Networking Fundamentals](#)
2. [Qmxb versatility: Point-to-Multipoint and Point-to-Point with beamforming](#)
3. [Success story: InfiNet solutions in FLEX network](#)
4. [Beamforming Sectorial Antenna](#)
5. [Datasheet Qmxb/5.300.2x300.2x21](#)
6. [Datasheet E5-BSQ](#)