

Devices

Successfully pass the free certification exam at IW Academy and become an Infinet Certified Engineer.
[To the certification exam](#)

- [Devices review](#)
 - [Device profile](#)
- [Network infrastructure requirements](#)
- [Management](#)
 - [Configuration](#)
 - [Configuration changing](#)
 - [Configuration editing](#)
 - [Job creation](#)
 - [Applying the configuration](#)
- [Firmware](#)
 - [Upload firmware files](#)
 - [Firmware update](#)
- [Devices groups](#)
 - [Command execution](#)

InfiMONITOR NEXT allows the network engineers to monitor the status of the wireless devices and to manage their configurations.

Devices review

The section includes two key areas:

- **Devices list** - devices that are in the user's visibility area.
- **Side area for detailed information.**

The list of devices is displayed in a table with the following columns:

- **Device** - the device name.
- **Status** - current device status.
- **Family** - family to which this device belongs.
- **Serial number** - unique serial number assigned to device at the production stage.
- **Groups** - list of groups the device belongs to.
- **IP address** - device's IP addresses list.

To apply a device filter, use the "Add filter" button at the top of the list and set the search parameters. The "IP-address" filter allows to search both a single address and a range of addresses (no more than 255).

[Jobs](#) | [Firmwares](#) | [Devices groups](#)

192.168.98.26 - 192.168.9

+

Device name

Group name

Status

Family

Serial number

Host		S/N	Groups	
R5000-Lmn1	<div></div>	183270	Test group	Default group
R5000-Lmn2	<div></div>	183286	Test group	
E5-BSE	<div>UP</div>	337425	Default group	
E5-STE2	<div>UP</div>	337428	Test group	Default group

Figure - Devices filter

Device profile

Each device is presented by its profile contains the whole information about device. There are following section in profile:

- **Status** - device operation parameters.
- **Maintenance** - management tools: firmware, configurations etc.
- **CLI** - device management via command line interface.

The "Status" section consists of several parts:

- The status of device and its wireless link.
- Network interfaces statistics.
- General information.

There is special section includes both the current and remote device. This section presents characteristics of wireless link in downstream and upstream. For local and remote devices, there is the ability to switch to its web interface or to manage via the command line.

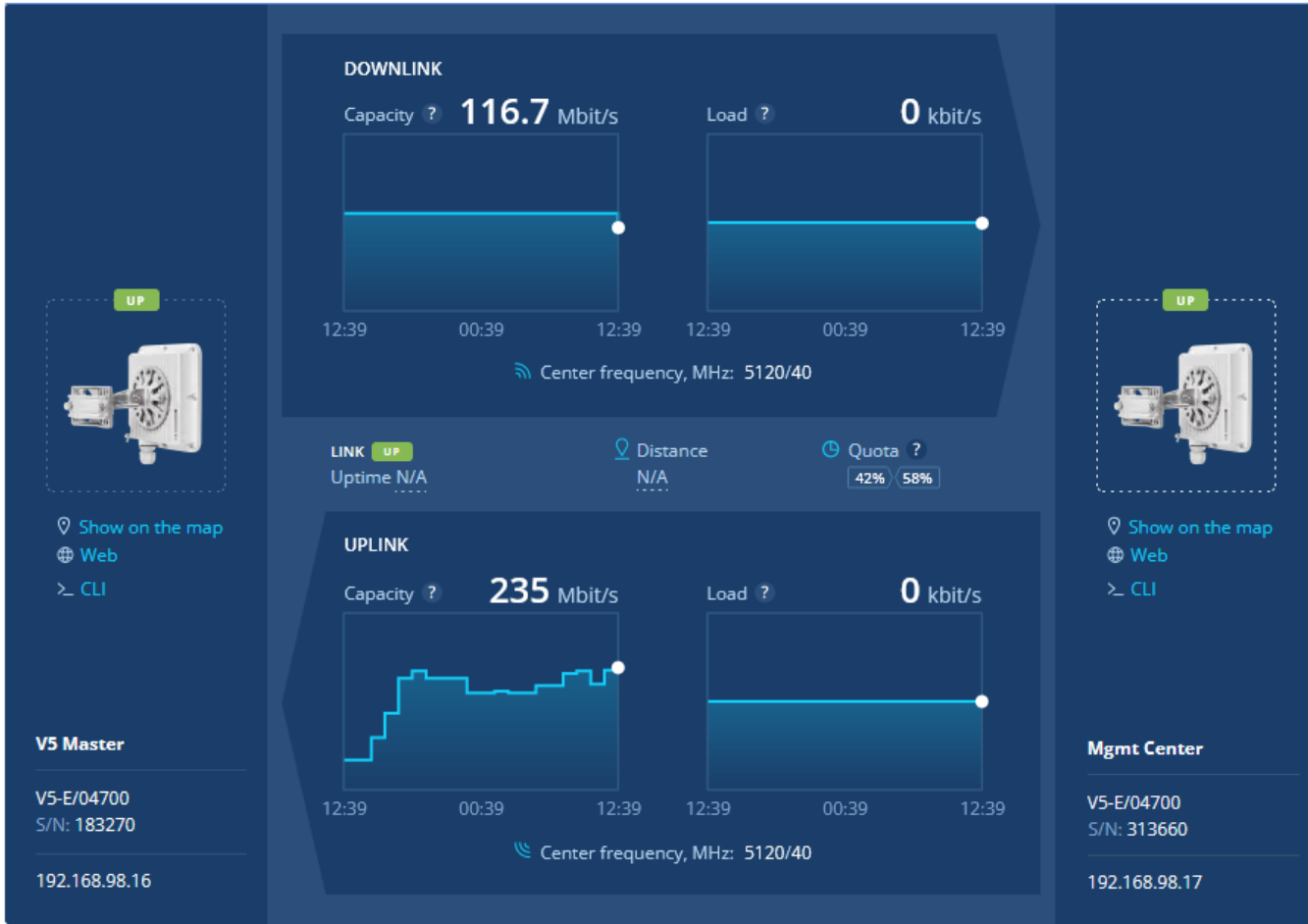


Figure - status of device and its links

Network infrastructure requirements

Management functionality requires network connectivity from wireless devices to the monitoring system port **2121/TCP**, please check your firewall rules.

Management

Management tools are presented in the "Maintenance" section of device's profile.

[← Device list](#)

UP

Master10

Status

Maintenance

CLI

Firmware

TDMA ver. 2.1.68

Manage

Configuration

Configuration from 01/03/2023 18:39

Manage

Planned downtime

✓ The device is not in planned downtime.

Add

Provisioning

✓ Done

Run now

Figure - management tools

Configuration

The configuration is automatically loaded for each device added to **Infimonitor Next**. If the device's configuration has been changed, it will be reloaded, but the previous configuration won't be deleted. Thus, the monitoring system always stores both the current device configuration and its previous versions.

NOTE

The configuration management feature is only available for devices that have been successfully provisioned. For more details proceed to the [Description and operational principles](#) section.

To update devices configurations safely via the monitoring system, perform a firmware update.

For InfiLINK 2x2, InfiMAN 2x2 families:

- MINT firmware version - above 1.98.50;
- TDMA firmware version - above 2.1.30.

For InfiLINK XG, InfiLINK XG 1000 families:

- Firmware version 1.8.4.

There are no restrictions for the InfiLINK Evolution, InfiMAN Evolution, Quanta 5/6/70 families.

To view the device configurations list, click on the "Manage" button in the "Configuration" row:

The list of configurations includes the entire configuration history, displayed as a table with the following columns:

- **Status** - current configuration status, the following values are possible:
 - Draft - draft configuration stored in the monitoring system and not applied on the device.
 - Success - the configuration was successfully downloaded from the device or applied on it.
 - Error - the applying of the configuration on the device has failed.
- **Source** - configuration source, the following values are possible:
 - EMS - configuration applied using **Infimonitor Next**.
 - Device - configuration received from the device. Configuration changes were made directly on the device, the monitoring system has detected it and downloaded the updated configuration.

- **Version from** - configuration date and time:
 - The date and time of its uploading to the monitoring system.
 - For the draft, the date and time of the last change.

Configurations



Status	Source	Version from
Success	Host	11/18/2021 15:44
Failed	EMS	11/18/2021 15:44
Failed	EMS	11/18/2021 15:36
Success	Host	11/18/2021 15:34

List of configurations

Select any configuration to view it:

Configuration from 11/18/2021 15:44×

Compare:

Select configuration



Name:

Configuration from 11/18/2021 15:44

Source:

Host

Property:

✔ Active config

Status:

Success.
Successfully loaded from the device

```
#Factory password mode: single
sys name R5000-Lmn1
sys prompt R5000-Lmn1
sys user admin
sys guest guestLogin
setpass $1$I6JUV$05u20Y0gBu7F5gLF4OQBB1
rf rf5.0 grid 40 5100-5250/10
rf rf5.0 grid 20 4850-6050/2.5
rf rf5.0 grid 10 4850-6050/2.5
rf rf5.0 grid 5 4850-6050/2.5
rf rf5.0 grid 15 4850-6050/2.5
rf rf5.0 band 40
```

Figure - device configuration

You can compare the two configurations to see how they differ. To do this, in the "**Compare**" list, select any other configuration.

To highlight changes in the comparison mode, click on the "**Show the difference**" button.

Compare configurations



Version from 11/18/2021 15:44 ▾

Show the difference

Version from 11/18/2021 15:34 ▾

```

#Factory password mode: single
sys name R5000-Lmn1
sys prompt R5000-Lmn1
sys user admin
sys guest guestLogin
setpass $1$I6JUV$05u20Y0gBu7F5gLF4OQBB1
rf rf5.0 grid 40 5100-5250/10
rf rf5.0 grid 20 4850-6050/2.5
rf rf5.0 grid 10 4850-6050/2.5
rf rf5.0 grid 5 4850-6050/2.5
rf rf5.0 grid 15 4850-6050/2.5

```

```

#Factory password mode: single
sys name R5000-Lmn1
sys prompt R5000-Lmn1
sys user admin
sys guest guestLogin
setpass $1$I6JUV$05u20Y0gBu7F5gLF4OQBB1
rf rf5.0 grid 40 5100-5250/10
rf rf5.0 grid 20 4850-6050/2.5
rf rf5.0 grid 10 4850-6050/2.5
rf rf5.0 grid 5 4850-6050/2.5
rf rf5.0 grid 15 4850-6050/2.5

```

Figure - configurations comparing

Configuration changing

Changing the device's configuration includes the following steps:

1. Select the configuration version.
2. Edit selected configuration.
3. Create job - set a task for applying the configuration on the device.
4. Apply the configuration — the configuration is applied on the device.

Configuration editing

Click "**Edit**" button in the selected configuration. A draft will be created, with the content identical to the previously selected configuration. Each device may have only one configuration draft. If you create a new draft the previous will be rewritten.

After editing, you can save a draft without applying it on the device, or create a job to apply it. You may apply any configuration version without editing by clicking "**Create job**" button.

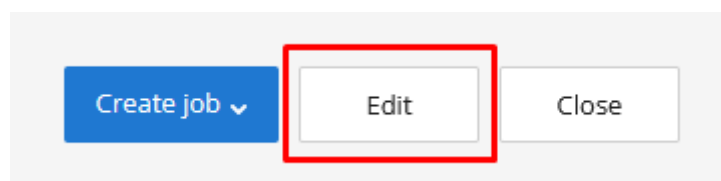


Figure - edit existing configuration

Job creation

When you are ready to apply configuration draft please click "**Create job**" button.

In the menu, you can schedule the time for applying the configuration, the following options are available:

- Create job at a required date and time.
- Create job for the current time.



Note

In order to perform the jobs execution at a required time, it is necessary to set date and time on the virtual machine where **InfMONITOR NEXT** is installed. Time settings can not be made in the monitoring system.

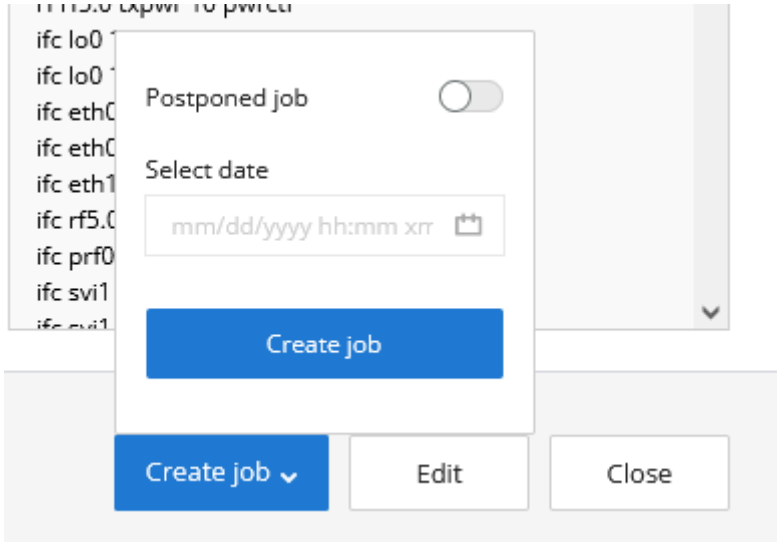


Figure - job creation

Applying the configuration

At the set time, the configuration will be downloaded to the device. After successful validation, the configuration will be applied and the device will reboot.



Configuration applying procedure eliminates the risk of loss of communication with the device due to configuration errors or other failures. For details, see the [Description and operational principles](#).

After rebooting the device, **InfMONITOR NEXT** will re-poll it and perform a configuration check. If it was applied correctly, then the job will be marked as completed successfully. Otherwise, the job will fail.

Config update	● Completed	07/03/2020, 15:49:53	07/03/2020, 15:49:53	admin
---------------	-------------	----------------------	----------------------	-------

Figure - completed job

Firmware

The monitoring system provides the ability to update the software, both on one and on a group of devices.

Upload firmware files

To update the firmware, it must be previously uploaded into a special storage of the monitoring system. In order to do this, go to the "**Management**" section and click the "**Firmware**" button.

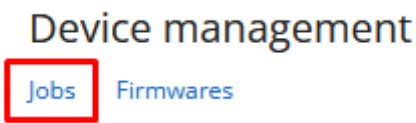


Figure - firmware files storage

Each file in the repository has the following fields:

- **Version** - the firmware version.
- **Platform** - the hardware platform for which the firmware is intended. The monitoring system will allow to create an update task using only those files that are suitable for the device selected.
- **Type** - the firmware type, MINT or TDMA.
- **Source** - firmware files can be uploaded to the repository either manually or automatically from the update center (not available at the moment). Here will be displayed the source of the file.
- **Build date** - date when the firmware file was built.
- **Comment** - the monitoring system administrators can leave comments to each file.

Version	Platform	Type	Source	Build date	Comment
1.8.2-18	H12	XG	admin	08/21/2020, 15:22:44	
2.1.25	H08	TDMA	admin	08/28/2020, 13:17:36	
2.1.12	H11	TDMA	admin	11/01/2019, 15:22:54	

Figure - firmware files list

Firmware update

The firmware update is performed via a special update job. In order to do this, go to the "**Maintenance**" section of the device card. In the "**Firmware**" line click the "**Manage**" button. This will open a list of firmware files suitable for this device.


Firmwares			×
 Search			
Version ▼	Build date	Comment	
TDMA ver. 2.1.25	08/28/2020, 13:17:41		
TDMA ver. 2.1.12	11/01/2019, 15:22:54		

Figure - firmware files list

Select the firmware version to be applied to the device, then click the "**Create job**" button. Same to the configuration update jobs, you can run the update immediately or schedule it for a later time.

Devices groups

The devices can be joined in groups. Grouping is necessary to manage visibility areas and perform group operations such as software updates. Each device must be added to at least one group.

By default, **InfMONITOR NEXT** has the following groups:

- Default group - first group necessary to start using **InfMONITOR NEXT**.
- Group for automatically discovered devices - a special group where automatically added devices are placed.

To manage groups in "Device Management" section, go to the "Device Groups" subsection. This section provides a list of all groups created in the monitoring system, to create a new group, click the "Add Group" button on the sidebar. To view devices of a particular group, select the group and click the "Show devices in group" button on the sidebar.

[← To hosts list](#)

Devices groups

Group	Description	Composition
Default group		17 devices
Test group		2 devices
Test group 1		2 devices
Test group 2		1 device

Default group

Name

Default group

Description

Base stations of the backbone radio network

[Show devices in the group](#)

Figure - devices groups

Command execution

The monitoring system allows to manage the device using the command line. The command line is available in the "CLI" subsection of the device status section.

StatusMaintenanceCLI

Connecting to E5-BSE....
Connection is successful! Type a command and press "Enter" to execute it.

E5-BSE\$1> co sh
E5000 WANFlex H16S22-TDMAv0.9.13 rev:3c1f55a * Nov 15 2022 10:14:41 * SN:337425

#Environment
set CONFIG_GENERATED "WEB INTERFACE"


#System parameters
#Factory password mode: single
sys name E5-BSE
sys prompt E5-BSE
sys gpsxy E59.998885 N56.920951
sys user root
setpass \$1\$NpWsk\$Y8iwSuFheQ1WKUU5A1Ye1
sys guest guest

#Radio module parameters
rf rf6.0 grid 10 4800-6060/10
rf rf6.0 grid 20 4800-6060/10
rf rf6.0 grid 40 4800-6060/10
rf rf6.0 band 40 transient
rf rf6.0 mimo burst

CLI hints

- Please use command "config save" for save changing in configuration.
- Connection will be broken after 10-minutes inactive timeout.
- For security increasing, the CLI does not allow the use of symbol ";" (semicolon).
- The CLI doesn't support commands longer than 100 symbols.
- The full catalog of CLI-commands is located in [technical documentation](#).

Figure - command execution

To clear the command line window, click the  button.

To manage the device from the monitoring system, it must be provisioned, see [System configuration - Provisioning](#).

A complete list of commands is available in the technical documentation:

- For InfiLINK 2x2, InfiMAN 2x2, InfiLINK Evolution, InfiMAN Evolution - [WANFlex - Technical User Manual](#)
- For InfiLINK XG, InfiLINK XG 1000 - [InfiLINK XG / InfiLINK XG 1000 - CLI Commands - Technical User Manual](#)