

# Backup



Successfully pass the free certification exam at IW Academy and become an Infinet Certified Engineer.

[To the certification exam](#)

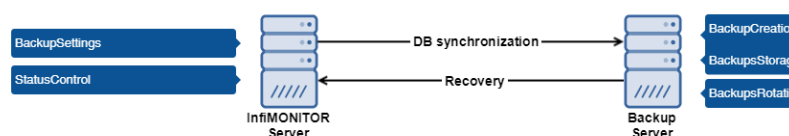
- [Backup system Architecture](#)
- [Backup Server Installation](#)
- [Backup Server Managing](#)
- [Restore from a backup](#)

Backup of InfiMONITOR may be needed in order to restore the monitoring data, that has been lost due to fault or other different factors.

## Backup system Architecture

InfiMONITOR continuously handles a lot of information coming from wireless units. In this case the backup process creates additional load that may highly increase the time of reaction on changes in wireless network. The backup process is performed on a dedicated server to avoid the negative influence on the monitoring process.

The interaction between backup system and InfiMONITOR is shown on the scheme below.



For security reasons the monitoring system must be authorized on the backup server with the special password, that can be changed in the service mode.

## Backup and Recovery processes

Let's have a look at backup process from the moment of data appearance till data recovering.

Phase	Description
<b>DB synchro nization</b>	<p>Backup server database performs one way synchronization in real time with the InfiMONITOR database. In basic mode synchronization doesn't cause excessive load because it performs continuously, incrementally copying a small amount of new and updated data.</p> <p>But there are two cases when synchronization may be intensive:</p> <ol style="list-style-type: none"> <li>1. Backup server first activation. In this case the primary full backup of InfiMONITOR database is performed.</li> <li>2. Long absence of communication between backup server and monitoring system. In this case the data is out of sync, that requires a full backup to be performed again.</li> </ol>
<b>Backup Creation</b>	<p>Backup creation is performed on the backup server.</p> <p>Backups frequency is defined by administrator via InfiMONITOR web interface. Copying is performed by file system and occurs almost instantly.</p>
<b>Backups Storage</b>	<p>Backup server stores each of backups. The list of backups is available via InfiMONITOR web interface.</p>
<b>Backups Rotation</b>	<p>Backups are stored for the period of time set by administrator via InfiMONITOR web interface. The obsolescence control is performed daily. A copy whose creation date exceeds the retention period will be deleted.</p>
<b>Recovery</b>	<p>Data restoring from a backup is performed only with a clear InfiMONITOR installation. Administrator should specify the credentials for accessing the backup server and select a backup for recovery from the list of backups. During the final installation phase, InfiMONITOR will download the backup from the backup server, and then apply it.</p>

## Backup Server Installation

### System requirements

The backup system is sensitive, first of all, to the amount of disk space. The CPU load and the amount of used RAM are relatively small, so the requirements for them are significantly lower than those of InfiMONITOR. To determine the necessary amount of disk space, the following indicators should be guided:

1. The amount of used disk space in "Databases" section ("[Disk space](#)"). We recommend to allocate at least twice the amount for the backup server.
2. Backups frequency.
3. Backups period of time storage. The longer the copies are stored, the more disk space may be required.

Below are the recommended system requirements for the platform depending on the devices number to monitor by the InfiMONITOR:

Devices	Up to 2 000	Up to 10 000
CPU	Intel Core i3 3 GHz, 4 cores level	Intel Core i3 3 GHz, 6 cores level
RAM	from 6 Gb	from 8 Gb
HDD	from 500 Gb	from 1 TB
Additional		Hardware controller in RAID 10 level

**Table - The platform system requirements**



#### CAUTION

Mandatory requirement to CPU it must be x64 architecture.

In order to install InfiMONITOR on the virtual platform server's CPU must support hardware virtualization enabled in the BIOS.

### Installation

Performed on a separate server or virtual machine (*VMware ESXi, Microsoft Hyper-V, Citrix XenServer* are supported). For installation you should use the standard distribution kit of the InfiMONITOR monitoring system.



#### WARNING

Backup functions is available starting with the InfiMONITOR 2017.3 version.

#### Step 1 - Booting

- Installation on a virtual machine - connect ISO image with InfiMONITOR distributive, set your BIOS to boot from CD.
- Installation on a dedicated server - insert CD or USB flash drive with InfiMONITOR, set your BIOS to boot from the appropriate device.

#### Step 2 - Starting Installation

Start the server or virtual machine. Select "Install InfiMONITOR Backup Server" that apperas in the installation menu after booting.

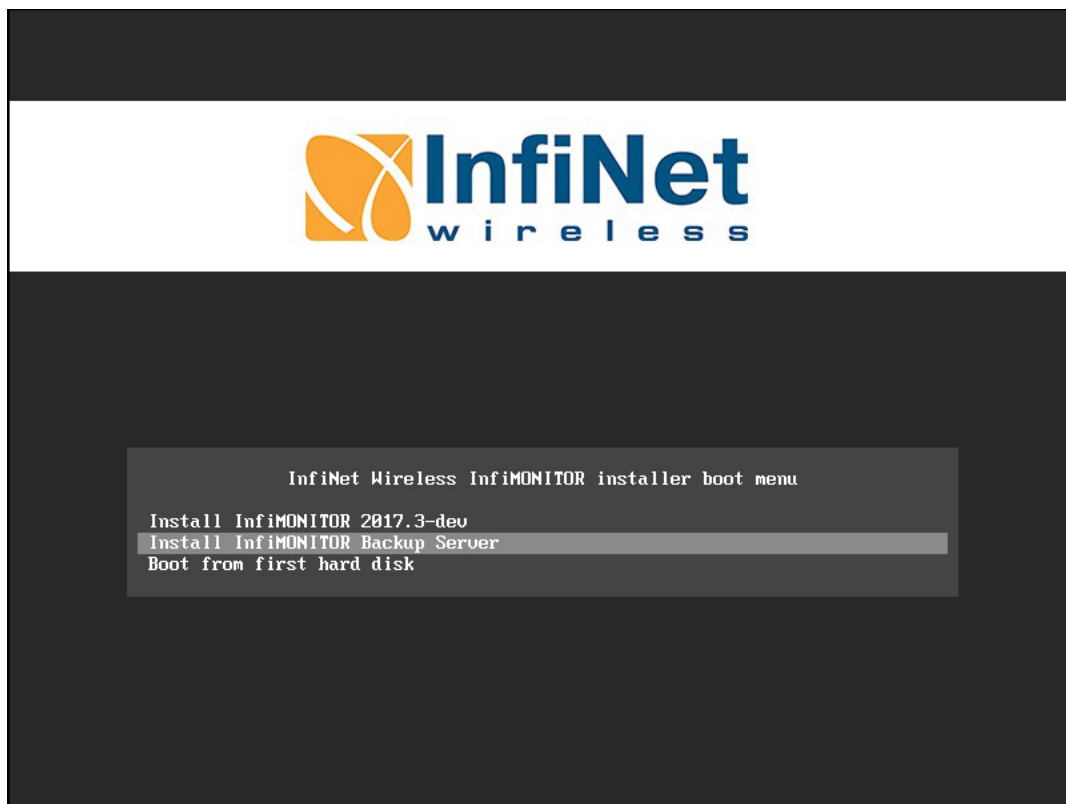


Figure - Step 2: Starting Installation

The next steps are similar to the InfimONITOR installation process and described in the section "[Installation of InfimONITOR](#)".

## Configuration



### NOTE

Please perform the Firewall configuration for the backup server to work properly. In the InfimONITOR firewall configuration open the 50001/ tcp port for interaction with the backup server, in the backup server firewall configuration open the 2121/tcp, 30000-30009/tcp, 50000/tcp ports for interaction with the InfimONITOR.

After the installation is complete and the backup server is started, you must set up the connection between InfimONITOR and backup server. Go to the "Settings" section of InfimONITOR web interface, in "Backups" specify the backup server IP address or domain name as well as the password for authorization and click the "Apply" button.

### Backups

Backup server status : **Not connected**

IP-address / FQDN :

Password :

**Apply**



### NOTE

By default the authorization password is set to "backup", but we strongly recommend to change it right after the backup server is installed. This can be done in the backup server service mode.

## Title

In case of successful connection to the backup server the status will be changed and settings will be available.

**Backup server status :** Available

**IP-address / FQDN :** 192.168.200.230

**Password :** backup

**Backup frequency :** 7  
1 day 7 days

**Start hour :** 2  
0 hour 23 hour

**Retention period :** 1  
1 month 12 month

Apply

- **Backup frequency** - the frequency of backups with an accuracy of 1 day. The minimal frequency - 7 days.
- **Start hour** - the hour at which the backup process begins.
- **Retention period** - the period of backups storage with an accuracy of 1 month. The maximum storage time is 12 months.

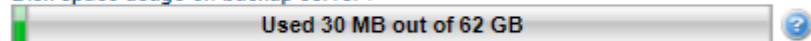


### NOTE

If the amount of free disk space on the backup server is less than 10 GB or less than 10% of the total volume, then regardless of the value of "Backup retention period", the oldest backups are automatically deleted. This procedure is designed to prevent the complete exhaustion of disk space.

The amount of occupied disk space on the backup server can be determined using a special indicator in the InfiMONITOR web interface.

Disk space usage on backup server :



## Status control

### Status

The backup server status is displayed both in InfiMONITOR web interface and in the backup server service mode. The following statuses are exist:

- **Not connected** - the connection between InfiMONITOR and backup server is not established.
- **Initializing** - the InfiMONITOR services are prepared for backup. In general this status is set only at the first connection of InfiMONITOR to the backup server.
- **Available** - the connection between InfiMONITOR and backup server is established, backups are being performed.

### List of backups

In the InfiMONITOR web interface you may see the last backup creation date and time, and also the list of all backups that are stored on the backup server.

Last backup : Thu Nov 02 2017 13:05:14 GMT+0500 [InfiMONITOR](#)  
[2017.3-dev](#)  
[All backups](#)



## NOTE

The list of all backups is available via FTP. The standard username "backup" and password for authorization, which is used when connecting InfiMONITOR to the backup server, should be used for authorization.

## Backup Server Managing

### Service mode

The backup server is managed exclusively in the service mode, which is accessed directly on the server.

By default, the service mode displays information about the current status of the backup server:

- Backup server status.
- Date and time of the last created backup.
- The IP address of the serviced InfiMONITOR server.

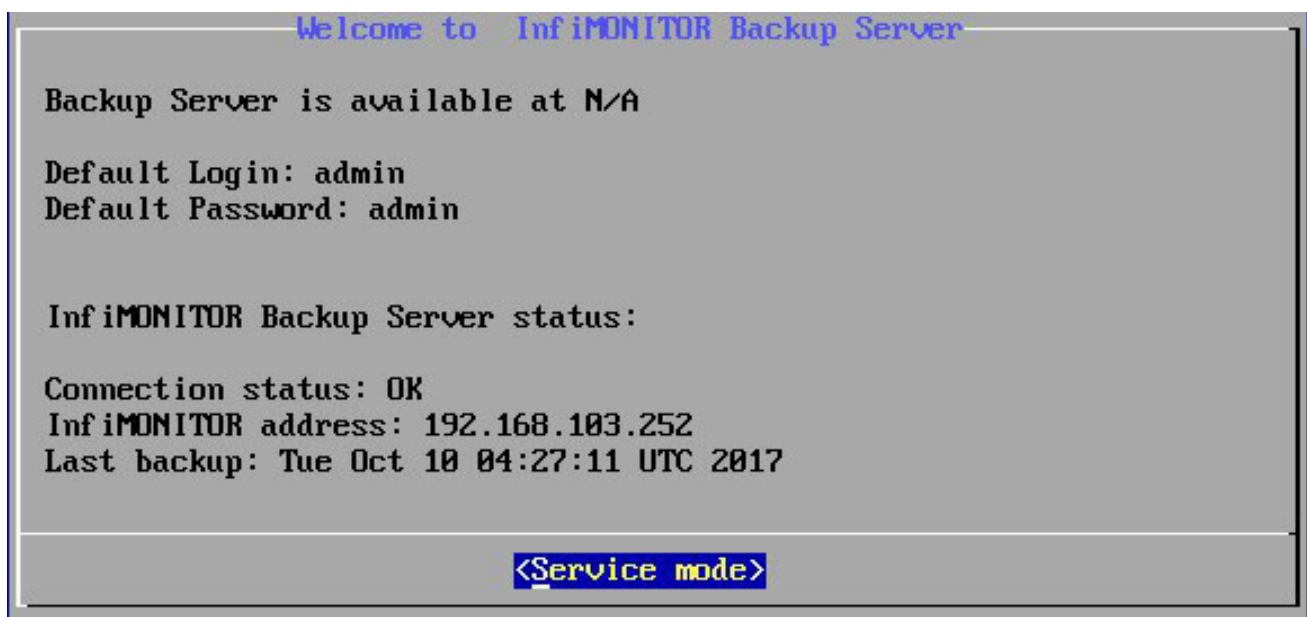


Figure - Backup Server status

Right after authorization in the service mode, you will be able to access the menu, which includes the following items:

- **Network settings** - the network adapter settings are similar to the InfiMONITOR service mode.
- **InfiMONITOR Instance** - the authorization password for connection between InfiMONITOR and backup server.
- **Change admin password** - change the password for authorization in the service mode.
- **Reboot InfiMONITOR Backup Server** - reboot the backup server.

### Upgrade

The backup server upgrade is performed automatically and sequentially, first InfiMONITOR, then backup server.

The monitoring system downloads update packages both for the components of InfiMONITOR and backup server. After InfiMONITOR components update completion the monitoring system publishes update packages for the backup server and tells it to perform the update. This guarantees systems compatibility which is a key factor of a correct backup server functioning.

## Restore from a backup

The recovery procedure from backup is performed during the installation phase of InfiMONITOR. The installer must have network access to the backup server since the backups will be downloaded from it. Recovery includes the following steps:

1. Perform InfiMONITOR installation in recovery mode.
2. Reboot the server after the installation is complete.
3. Run the recovery program.
4. Connect to the backup server and get a backup.
5. Data recovery.
6. InfiMONITOR launching.



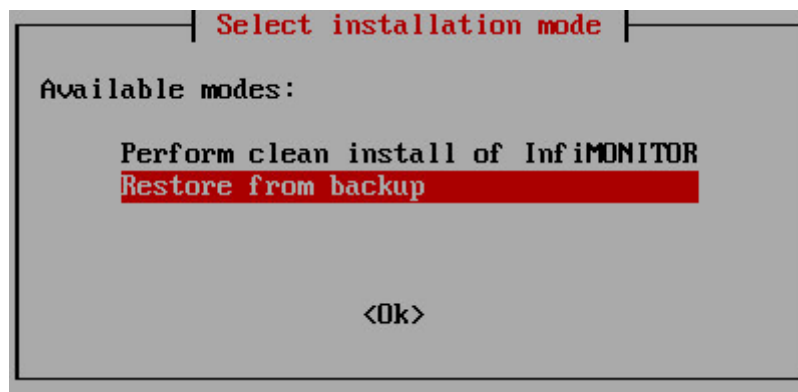
### NOTE

Recovery from backup is possible only for the same version of InfiMONITOR for which this backup was created.

### Step 1 - Launching the recovery program

Initiate the InfiMONITOR installation procedure as described in the section [Installation of InfiMONITOR](#).

Select the type of installation "**Restore from backup**".



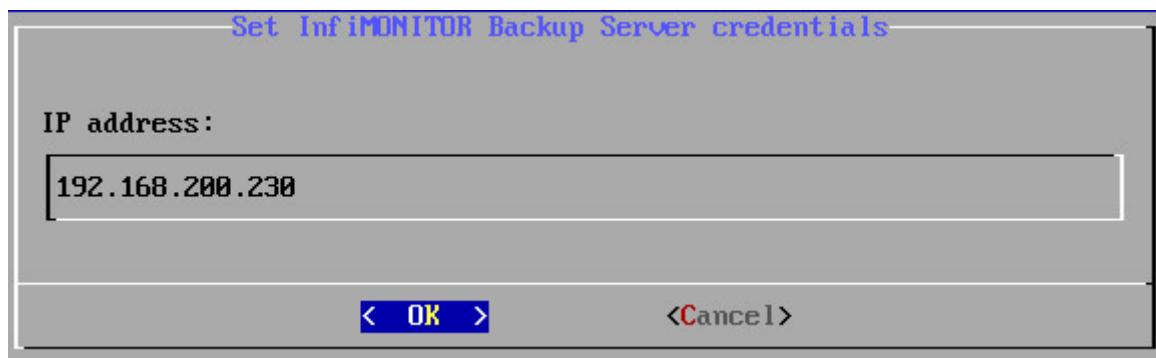
Step 1 - Type of installation

The next steps are similar to the InfiMONITOR installation process and described in the section [Installation of InfiMONITOR](#).

After installation is complete the recovery program will be started. In this program you should specify the credentials to connect to the backup server.

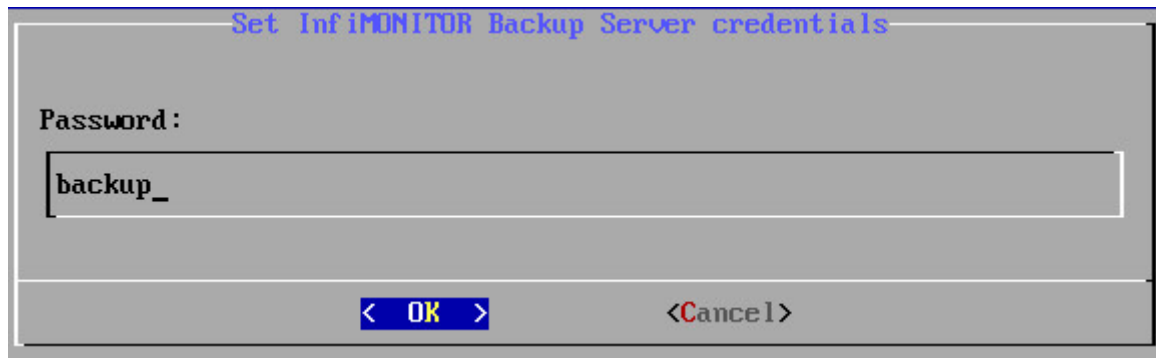
### Step 2 - Recovery program

Set the backup server IP address.



Step 2 - Credentials to access the backup server

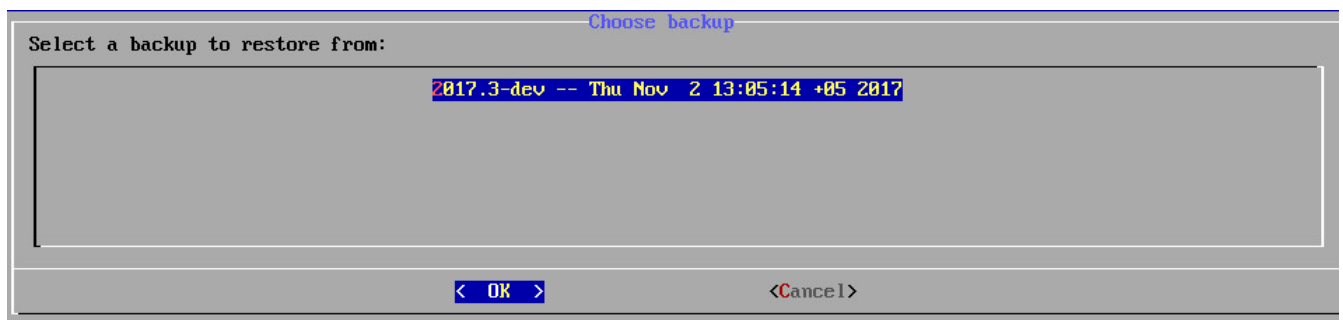
Set the backup server authorization password.



A screenshot of a terminal window showing a dialog box titled "Set InfiMONITOR Backup Server credentials". The dialog box has a grey background and a black border. It contains a label "Password:" followed by a text input field containing the text "backup\_". At the bottom of the dialog box, there are two buttons: "< OK >" and "<Cancel>".

Step 2 - Credentials to access the backup server

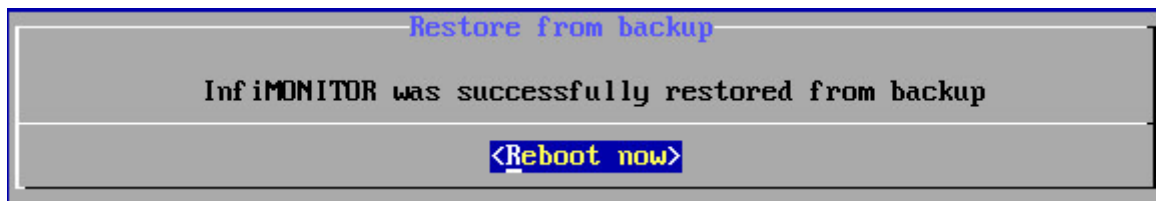
After connection to the backup server is established the list of backups will be shown, select one of them.



A screenshot of a terminal window showing a dialog box titled "Choose backup". The dialog box has a grey background and a black border. It contains a label "Select a backup to restore from:" followed by a list box containing a single item: "2017.3-dev -- Thu Nov 2 13:05:14 +05 2017". At the bottom of the dialog box, there are two buttons: "< OK >" and "<Cancel>".

Step 2 - Backup selection

Complete the recovery by rebooting the server.



A screenshot of a terminal window showing a dialog box titled "Restore from backup". The dialog box has a grey background and a black border. It contains the text "InfiMONITOR was successfully restored from backup". At the bottom of the dialog box, there is a button labeled "<Reboot now>".

Step 2 - Recovery completion