

Network map



Successfully pass the free certification exam at IW Academy and become an Infinet Certified Engineer.

[To the certification exam](#)

Network map allows to visually determine the hosts connectivity and to get necessary information about hosts and links status and their active events.

There are two possible logical (topology) and geographical (map) views that can be represented with the button on the right top corner.



Figure - View selection

The logical view is based on logical connections between hosts, the geographical on the actual hosts coordinates

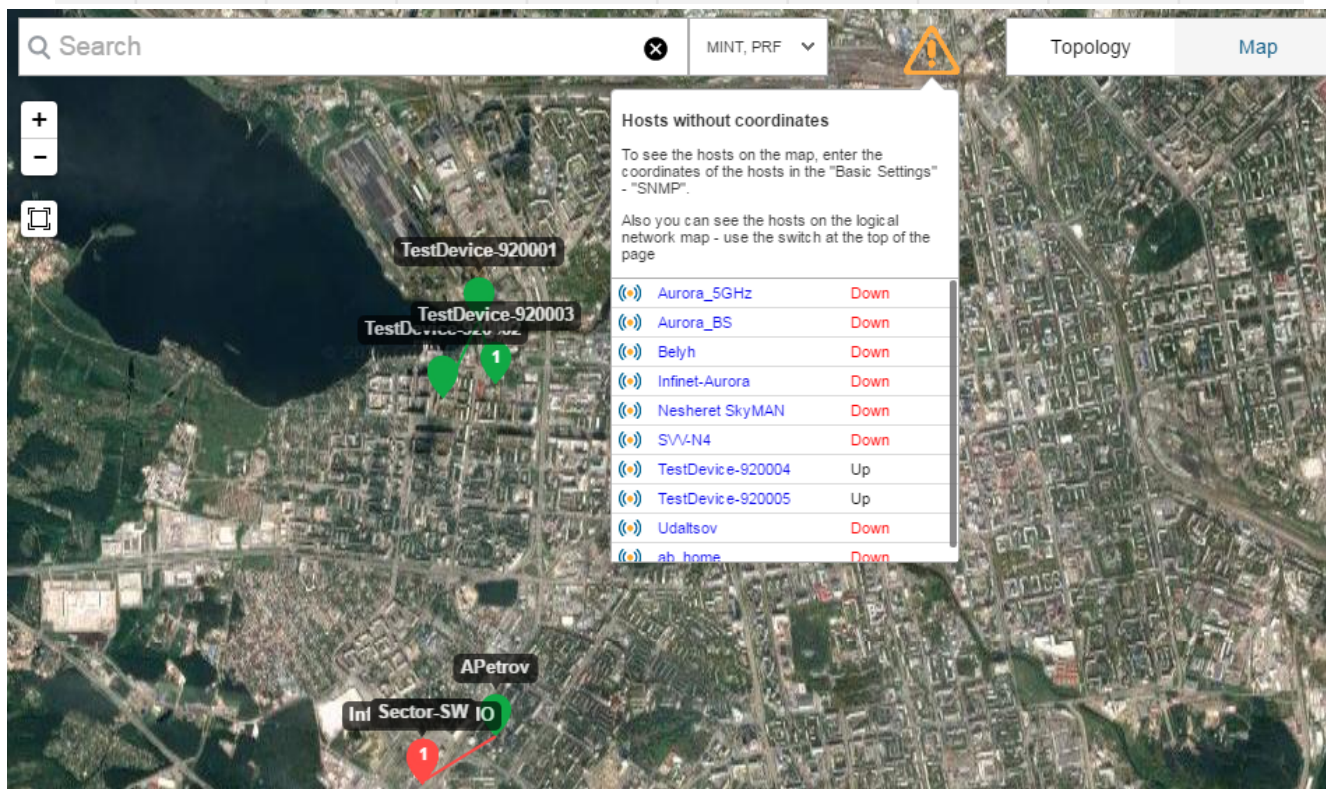
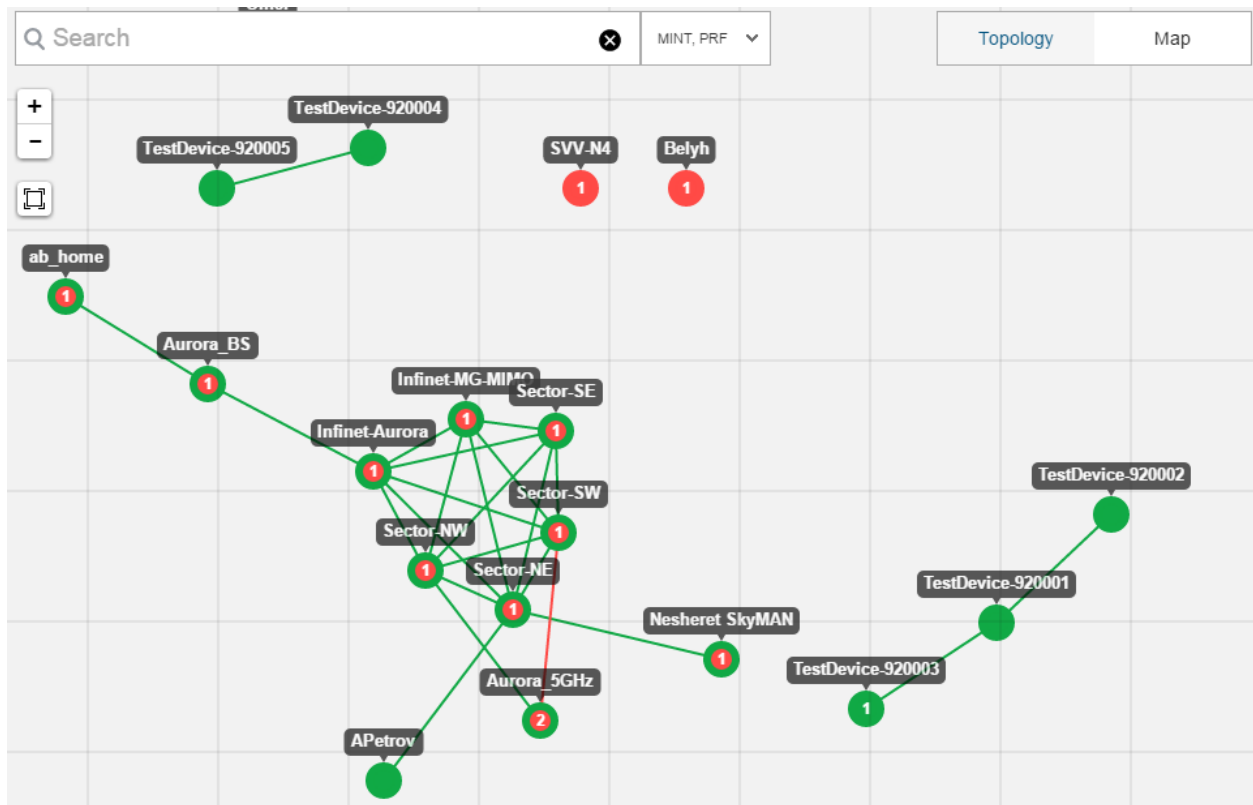


Figure - Logical and geographical views

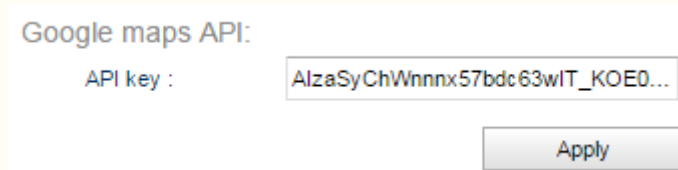
Notification with the list of hosts that are not indicated on the geographical map displays when you open the map view. In order to view them you need to enter hosts coordinates via web-interface in the section "Settings" → "SNMP" (InfiLINK XG), "Basic Settings" → "SNMP" (InfiNet Wireless R5000).



NOTE

Geographical view works with Google Maps API. In order to get the correct geographical map operation go to the section "Settings" → "System" and enter the key in the field "API key". The key can be obtained on the website <https://console.developers.google.com> → "Google Maps JavaScript API".

Instruction - [Obtaining Google API Key](#).



The screenshot shows a web interface for configuring the Google Maps API. It features a label "Google maps API:" followed by a text input field labeled "API key :". The input field contains the text "AlzaSyChWnnnx57bdc63wIT_KOE0...". Below the input field is a button labeled "Apply".

Figure - "API key" field

Represented information

Each network host is represented as a separate point on the map with the name. The point has the following structure:

- external circle color depends on the current host status;
- internal circle color depends on the maximum severity among the unresolved events of the host;
- in the center of the point there is the total number of unresolved events.

Host and link statuses information is updated in real-time.

Hosts clustering

For more convenient monitoring of a large number of hosts, the map performs their automatic joining into the cluster. The cluster is simply a visual object, it does not determine the logical hosts grouping. The more you are zoom out the map view the more number of hosts comes into one cluster, and on the contrary, the more you are zoom in the more number of hosts will be shown as a separate point. Clicking on a cluster will display a list of including hosts.

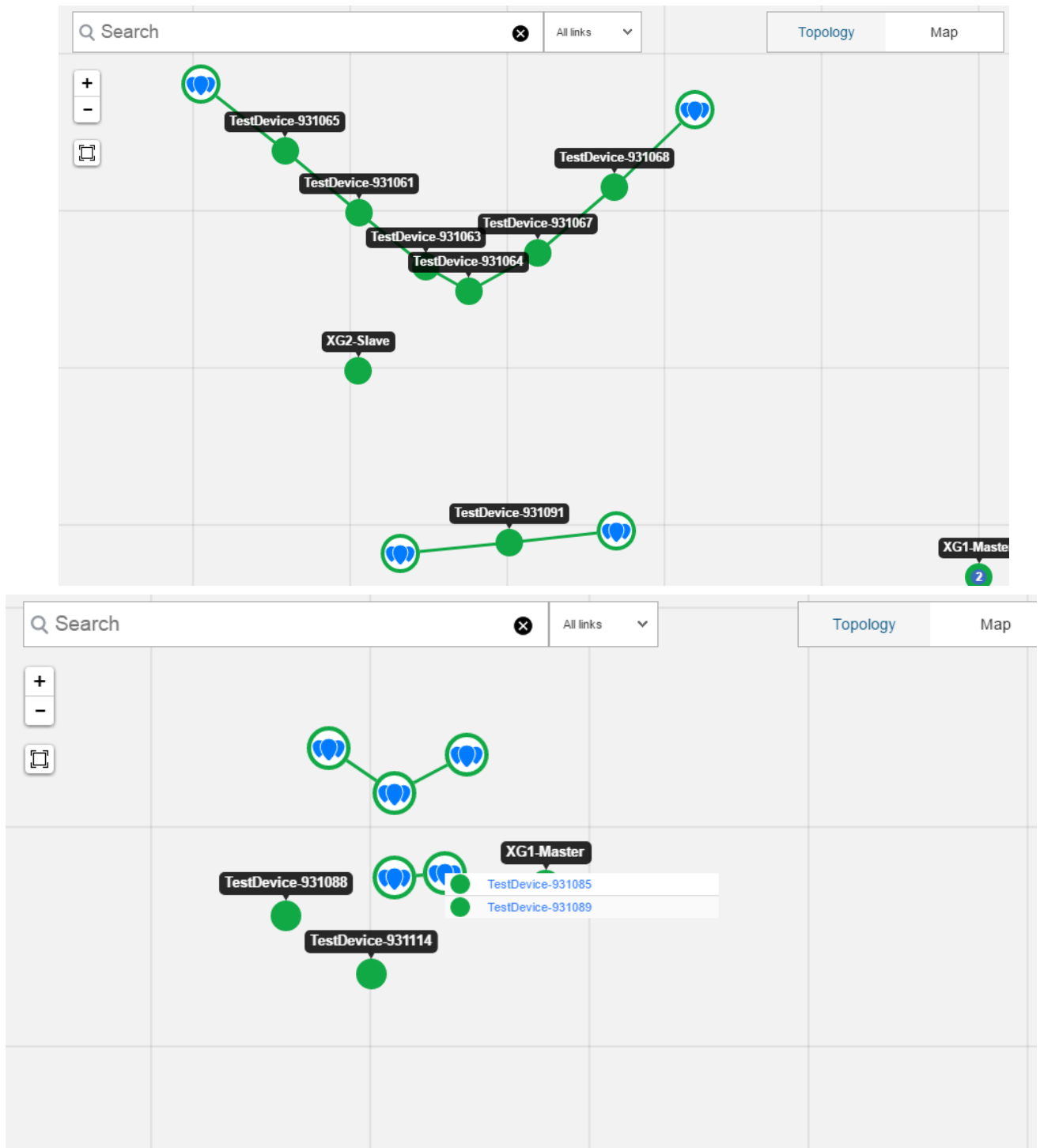


Figure - Examples with clustering

Monitoring

For detailed information on each host click on it to get properties panel. In this case the host point on the map will be highlighted with a blue circle.

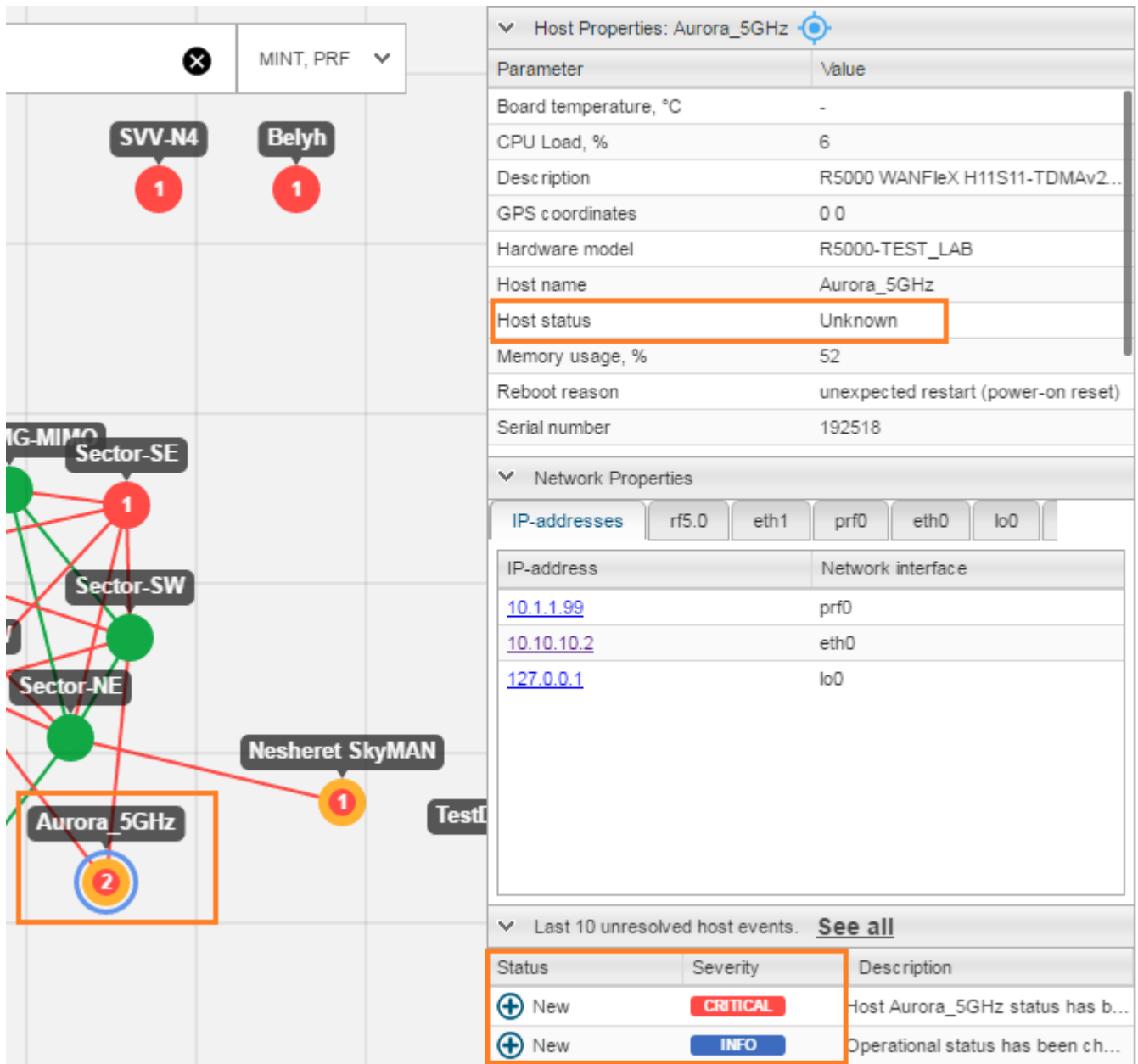


Figure - Host properties

Links are represented as lines, the color of which depends on the connectivity between hosts. For detailed information on required link click on it to get properties panel.

For more convenient work links and hosts can be highlighted and centered on the map with the special button.

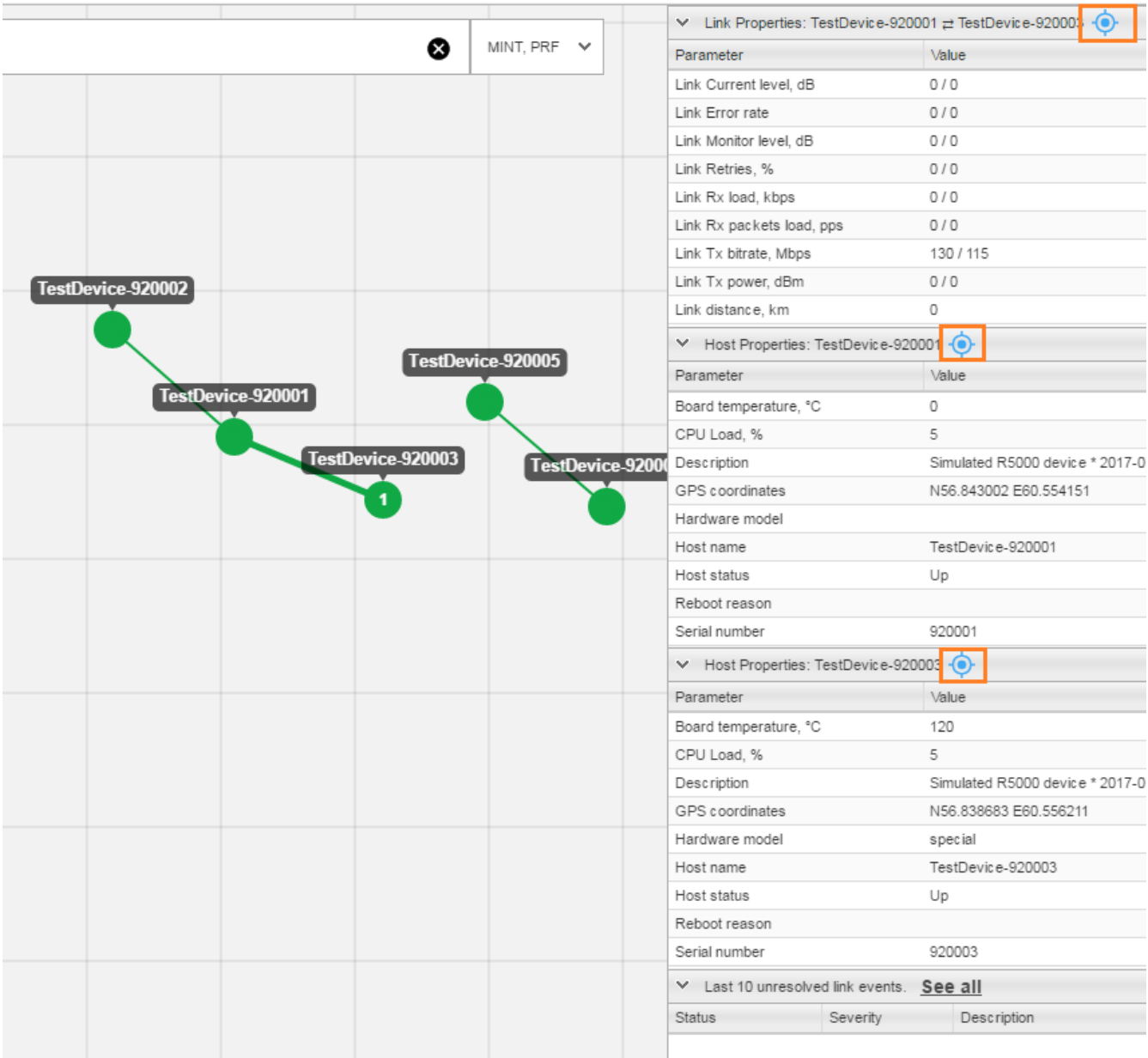



Figure - Centering button

A list of last 10 unresolved host/link events displays in the properties panel, to view all click on the link "See all". The subsection "Events" with all generated for this host/link events will open.

In order to hide properties panel and to clear highlight from the host or link use the button  in the field "Search".

Zoom button allows to zoom in and zoom out the hosts image on the map.



Figure - Zoom setting

The optimum map scale with all visible hosts can be set automatically with the special button in the top left corner.



Figure - Optimum-scale setting

In this subsection you can also select the link type that should be represented on the map.

By default the information about links "*MINT*", "*PRF*" and "*XG*" is displayed on the map. In order to hide or to display the particular link type use the drop-down list near the "Search" field - "**All links**".



Figure - Link type selection

Host search

In order to find the appropriate network host and to point on it use "Search" option.



Figure - Host search

The search can be performed over the following parameters:

- host name;
- host IP address.