

## MONT-KIT-85PW Mounting kit

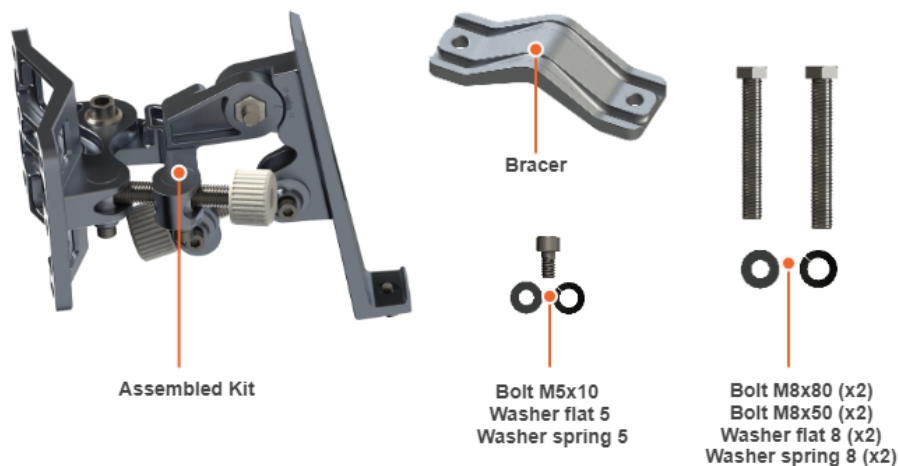


Successfully pass the free certification exam at IW Academy and become an Infinet Certified Engineer.

[To the certification exam](#)

High precision mounting kit MONT-KIT-85PW is supplied with model **Q70-39** by default. It allows to make reliable and easy installation of the unit with two-axis adjustment.

### Packing List



### Assemble Procedure

**Step 1:** Tighten the Assembled kit and Bracer to the pole using bolt M8, washer flat M8 and washer spring M8.

- Bolt M8x50 - used for installation on a pole with  $\varnothing$  30 ...  $\varnothing$  55 mm.
- Bolt M8x80 - used for installation on a pole with  $\varnothing$  55 ...  $\varnothing$  85 mm.

**Step 2:** Insert and tighten the Assembled kit on the back side of the device using bolts M5x10, M5x16, washers flat M5 and washers spring M5.

**Step 3:** Perform required antenna alignment using adjustment knobs and then tighten nuts M8.



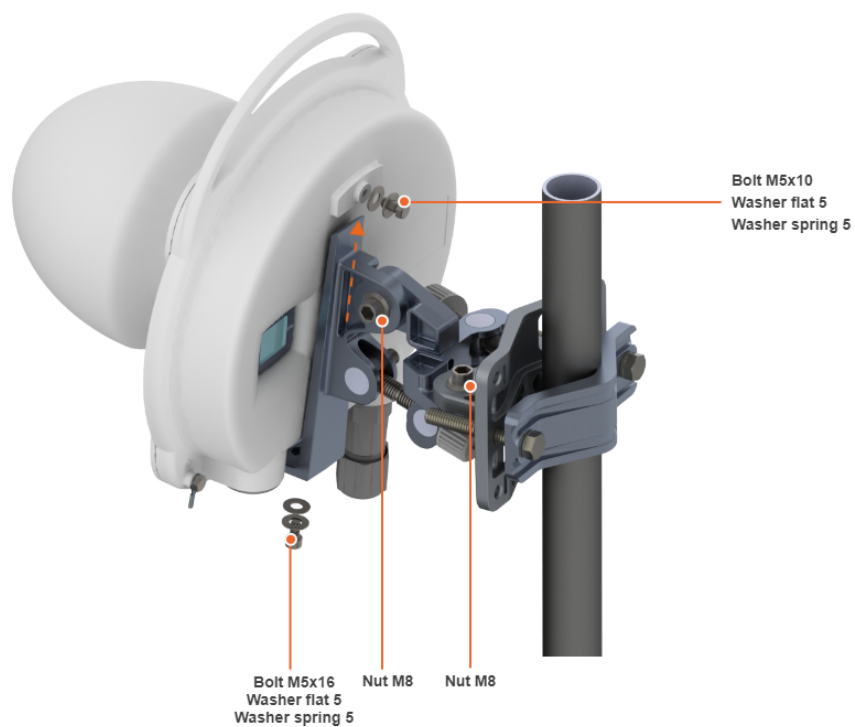
#### NOTE

M8 nuts are pre-tightened at the manufacturing facility in a position that allows the device to be adjusted using the adjustment knobs and ensures that the wireless device does not shift during the final nuts tighten.

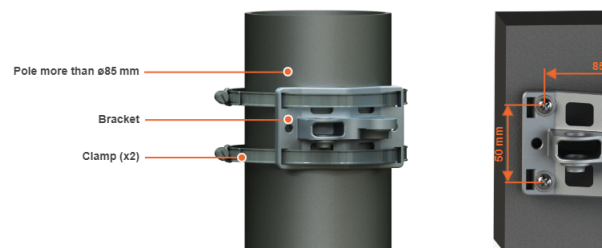


#### NOTE

If further adjustment is required, weaken the nuts M8 on about 15 degrees. Do not adjust the knobs without weaken the nuts first.



Mounting is carried out on a pole with a diameter 30 ... 85 mm. There are also possible options for mounting on a wall or pole with a diameter more than 85 mm.



#### NOTE

Clamps and other optional fasteners are not included in the mounting kit MONT-KIT-85PW.