

## \_MONT-KIT-85\_eng\_old

The default mounting kit packed with all the device models is **MONT-KIT-85**.

### MONT-KIT-85 Features

- Material: casted Aluminum
- Adjustment: two axis (vertical and horizontal)
- Mounting options:
  - standard pole (30-85 mm)
  - wall
  - thick pipe (>85 mm, horizontal/vertical) using additional fasteners (not included to the package)
- Compatible with all outdoor units produced by InfiNet Wireless
- RoHS compliant.



Figure - MONT-KIT-85 general view

### MONT-KIT-85 Assembly Scheme

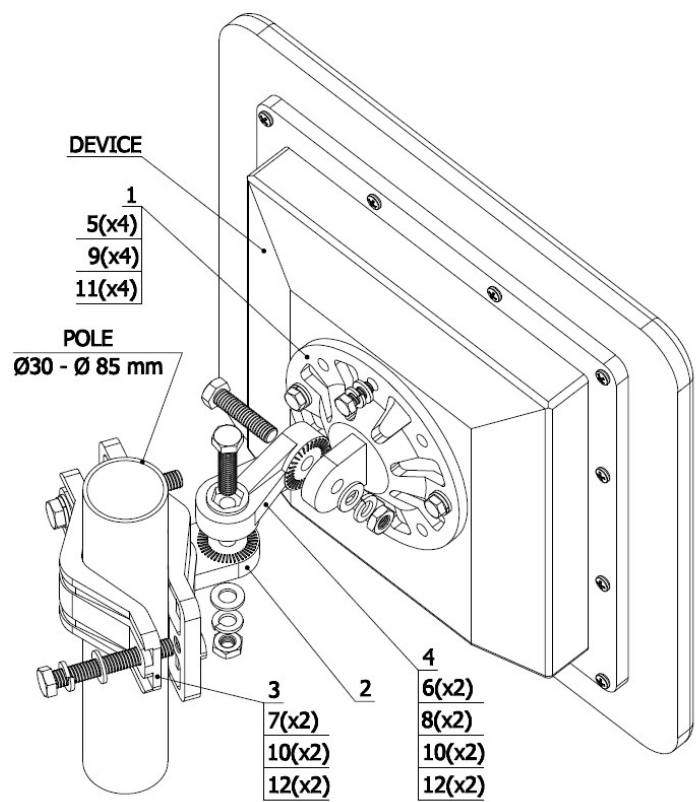


Figure - MONT-KIT-85 Assembly Scheme

MONT-KIT-85 **BOM** list is bellow

PN	Item	Q-ty
1	Basement	1
2	Bracket	1
3	Bracer	1
4	Lever	1
5	Bolt M6x14	4
6	Bolt M8x35	2
7	Bolt M8x80	2
8	Nut M8	2
9	Washer flat M6	4
10	Washer flat M8	4
11	Washer spring M6	4
12	Washer spring M8	4

Table - MONT-KIT-85 BOM list

## MONT-KIT-85 Installation procedure

1. Attach the Basement (PN1) to the back of the device, using Items with PNs 5, 9, 11
2. Tighten the Bracket (PN2) and the Bracer (PN3) to the pole, using Items with PNs 7, 10, 12
3. Attach the Lever (PN4) between the Bracket (PN2) and the Basement (PN1), using Items with PNs 6, 8, 10, 12. Do not fasten the nuts!
4. Adjust the required tilt and fasten all nuts at the required position.



### NOTE

Tighten the nut until the washer spring click, without pulling.