

MONT-KIT-85PW Mounting kit

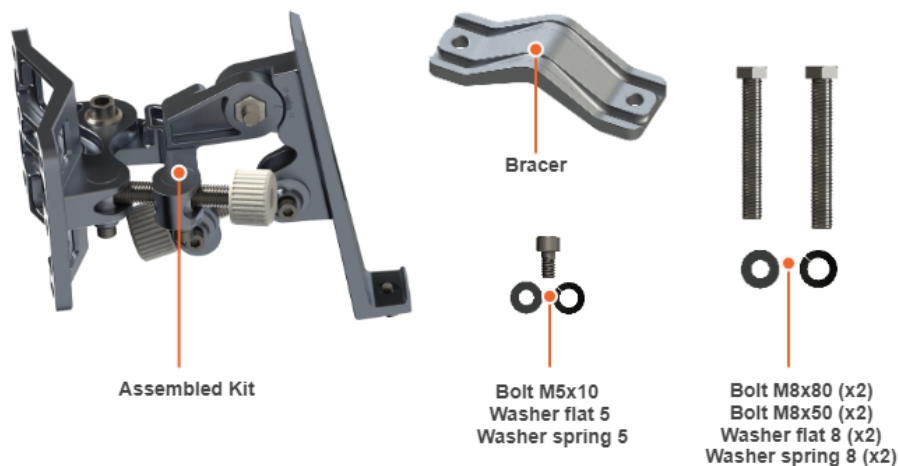


Successfully pass the free certification exam at IW Academy and become an Infinet Certified Engineer.

[To the certification exam](#)

High precision mounting kit MONT-KIT-85PW is supplied with model **Q70-39** by default. It allows to make reliable and easy installation of the unit with two-axis adjustment.

Packing List



Assemble Procedure

Step 1: Tighten the Assembled kit and Bracer to the pole using bolt M8, washer flat M8 and washer spring M8.

- Bolt M8x50 - used for installation on a pole with \varnothing 30 ... \varnothing 55 mm.
- Bolt M8x80 - used for installation on a pole with \varnothing 55 ... \varnothing 85 mm.

Step 2: Insert and tighten the Assembled kit on the back side of the device using bolts M5x10, M5x16, washers flat M5 and washers spring M5.

Step 3: Perform required antenna alignment using adjustment knobs and then tighten nuts M8.



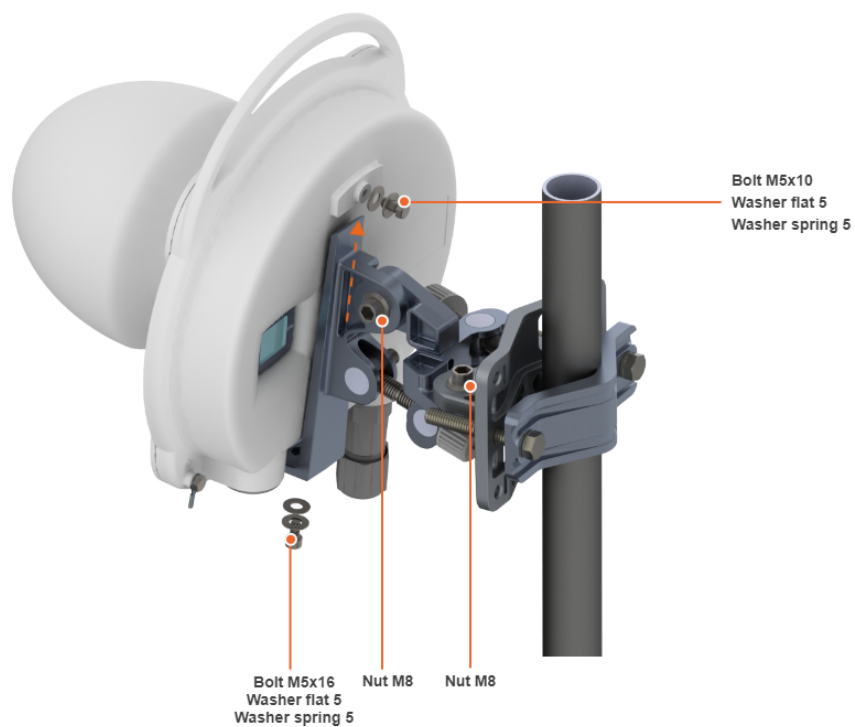
NOTE

M8 nuts are pre-tightened at the manufacturing facility in a position that allows the device to be adjusted using the adjustment knobs and ensures that the wireless device does not shift during the final nuts tighten.

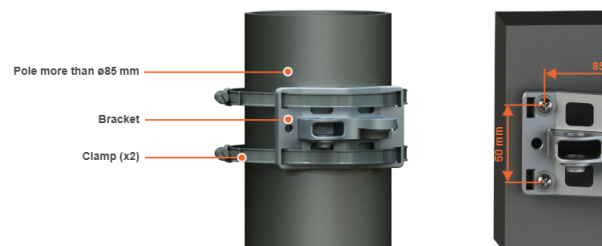


NOTE

If further adjustment is required, weaken the nuts M8 on about 15 degrees. Do not adjust the knobs without weaken the nuts first.



Mounting is carried out on a pole with a diameter 30 ... 85 mm. There are also possible options for mounting on a wall or pole with a diameter more than 85 mm.



NOTE

Clamps and other optional fasteners are not included in the mounting kit MONT-KIT-85PW.