

MONT-KIT-85 Mounting kit



Successfully pass the free certification exam at IW Academy and become an Infinet Certified Engineer.

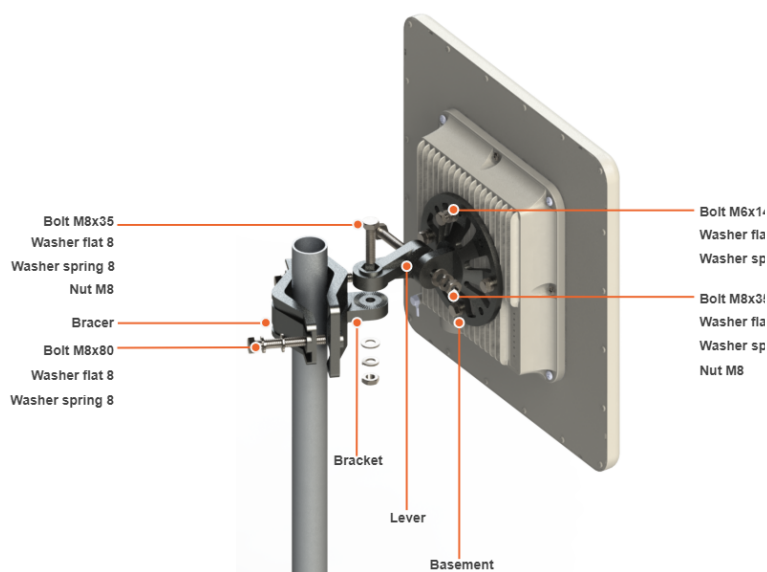
[To the certification exam](#)



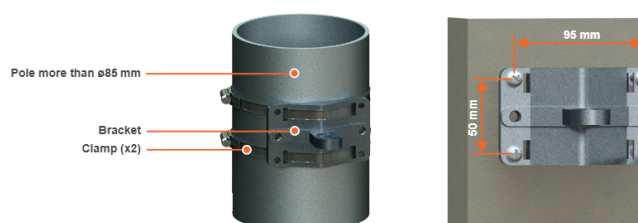
Successfully pass the free certification exam at IW Academy and become an Infinet Certified Engineer.

[To the certification exam](#)

MONT-KIT-85 is supplied by default with models Q5-25, Q5-23, Q5-E, Q6-25, Q6-E, Xm, Um, MONT-KIT-85S with models Q5-28, Q6-28, Xm (27 and 28 bBi). It allows to make reliable and easy installation of the unit with two-axis adjustment. Assemble the Mounting kit according to the scheme below. The nut must be tightened until the spring washer clicks, without over-tightening.



Mounting is carried out on a pole with a diameter 30-85 mm. There are also possible options for mounting on a wall or pole with a diameter more than 85 mm.



NOTE

Clamps and other optional fasteners are not included in the Mounting kit MONT-KIT-85.