

Antenna Alignment



Successfully pass the free certification exam at IW Academy and become an Infinet Certified Engineer.

[To the certification exam](#)

General recommendations

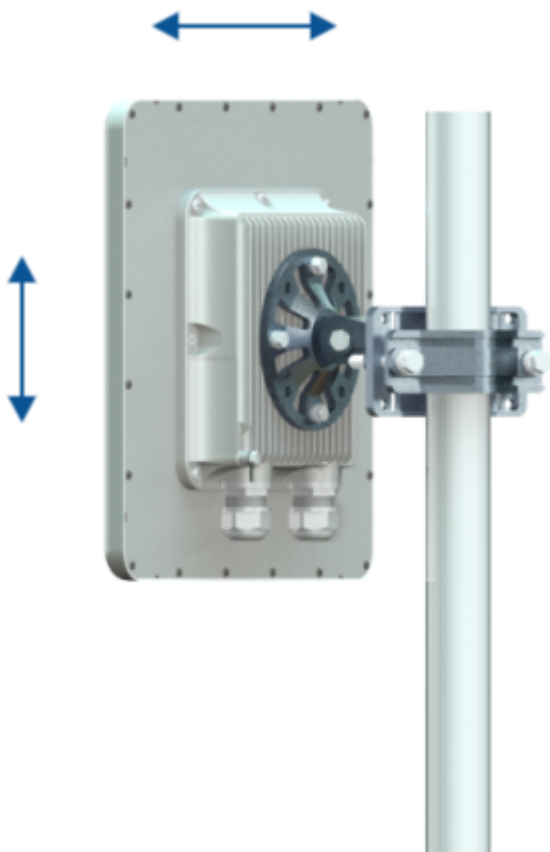
- It is recommended to have two teams prepared for alignment procedure, each team with at least two members: one should take the signal readings and communicate with the remote end, the other should manipulate the antenna.
- For rough alignment use the azimuth, elevation angle and suspension height from InfiPLANNER report.



NOTE

For devices with an integrated antenna 18 dBi, the mounting kit allows alignment only in the horizontal plane.

- On the device case there is a scale indicating the received signal level. The more often indicator flashes, the better quality of the connection. Blinking indicator shows an intermediate state, the more often indicator is blinking, the higher the connection level.
- For more accurate alignment, use the alignment tool built into the device web interface.
- After the initial alignment, the device at the remote side must be fixed. Firstly, the alignment is performed for one device, then for another.



Alignment tool

Title

Use the Alignment tool to point and optimize the antenna in the direction of maximum link signal. The built-in graphical antenna alignment tool displays the signal levels for both devices and both polarizations, this makes an alignment process fast and accurate.

A green marker indicates the current signal level. To achieve the best performance, this marker should be as close as possible to the pale green area values, which displays the maximum calculated value possible for this link. A gray marker indicates the maximum value that was reached on this channel.

Local unit



Remote unit

