

# Emergency Repair Console - the management of the unit is lost



Successfully pass the free certification exam at IW Academy and become an Infinet Certified Engineer.

[To the certification exam](#)

- [ERConsole recovery procedure](#)
  - [Required software](#)
  - [Network Requirements](#)
- [Restore to factory default settings using ERConsole](#)

If the management of the unit is completely lost (of the local and/or the remote one), the ERConsole recovery procedure should be used. ERConsole is a software application created to recover or add a new IP address to the InfiNet Wireless units. Additionally, the ERConsole can be used to reset the InfiNet Wireless units to the factory default configuration.

## ERConsole recovery procedure

### Required software

- Java Runtime Environment should be installed. Please download it if it is not installed: <http://www.java.com/en/download/>
- Download ERConsole from our ftp site: <https://ftp.infinet.ru/pub/Utils/EmergenceRepairConsole/ERConsole.zip>

### Network Requirements

- Turn off any anti-virus or firewall running on your computer. If no device can be discovered by ERConsole, turn on the firewall, and add an UDP connection port 10009 as an exception.
- Use a simple unmanaged switch as intermediary device between your PC and the **Infinet** unit. It is essential to reboot the InfiNet unit each time in order to activate the Emergency Repair Protocol on the unit, therefore the switch would prevent your PC Ethernet interface from flapping up and down. Using Cisco Catalyst switches for unit recovery is not recommended due to a known issue port mode negotiation delay.
- IP address should be configured on the PC for the ERConsole utility work.

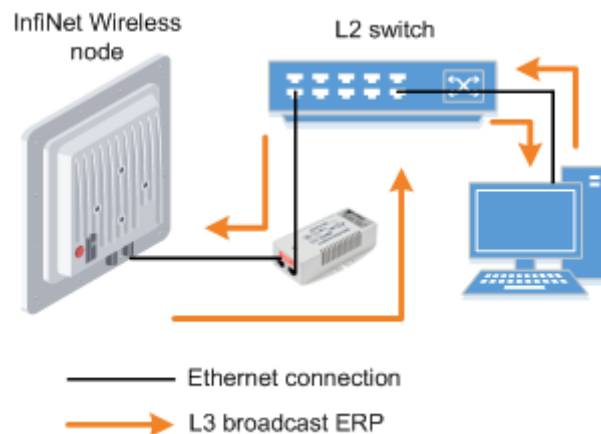


Figure - The recommended connection scheme

- Set default gateway address to the same network interface configuration connected to InfiNet Wireless unit or to switch connected with InfiNet Wireless unit. Turn off all the network interfaces (except Ethernet interface connected to InfiNet Wireless unit).

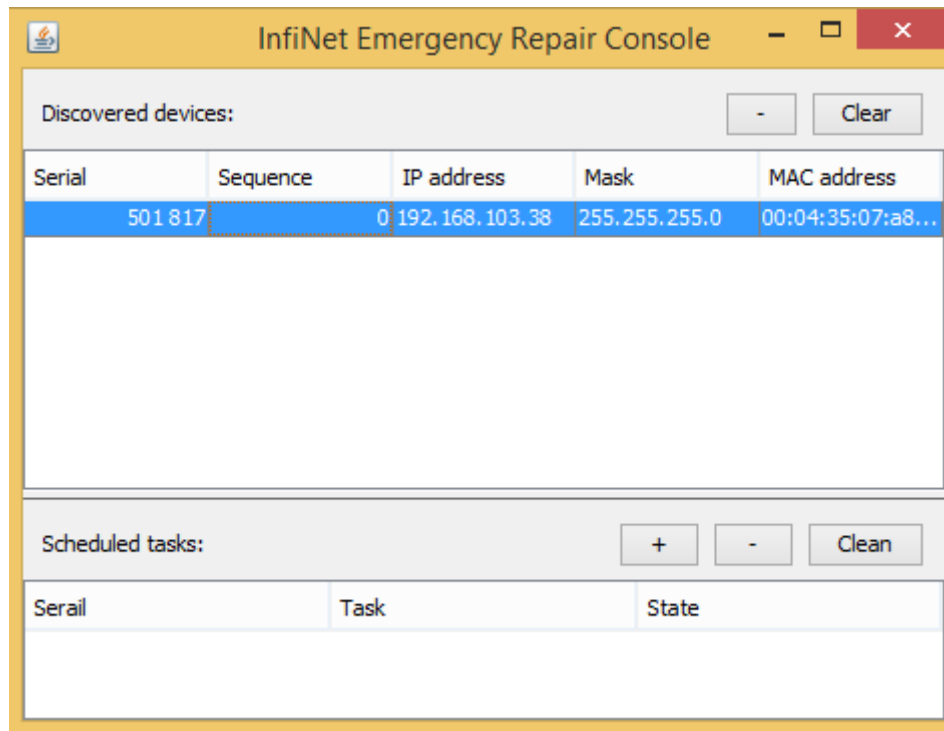


#### NOTE

ERConsole and InfiNet Wireless units exchange information only during the bootup process, therefore each time you need to read the units IP-address, to add a new IP-address or to restore to the default configuration, the InfiNet Wireless unit should be rebooted.

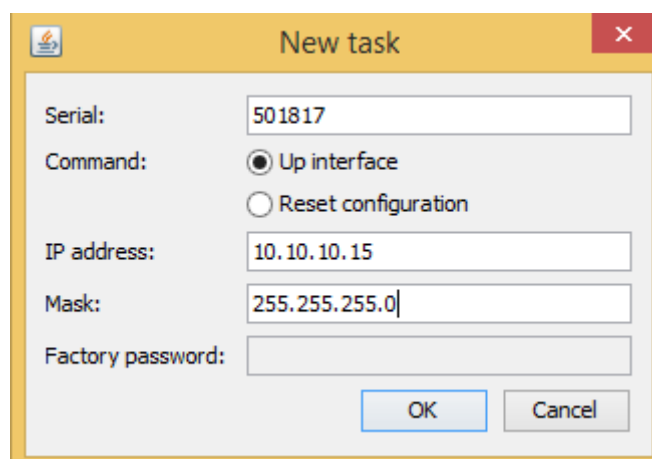
### Step-by-step instruction to obtain or add additional IP-address via ERConsole operation

1. Run the ERConsole.jar application downloaded from our FTP.
2. Connect a network Ethernet cables between the InfiNet Wireless unit, unmanaged switch and your PC, as shown in the figure above.
3. Turn off the InfiNet Wireless unit by removing ethernet cable from power supply unit and then turn it on in a few seconds.
4. Wait for 30 seconds and the ERConsole screen should receive update from the unit as shown in the figure below. The Serial number, number of device reset cycles ("Sequence" field), IP-address, network mask and MAC-address will be displayed on the screen.



**Figure - ERConsole information**

5. If an IP-address is assigned to the unit, configure on your laptop an IP-address belonging to the same network and connect to the unit. If there is no IP-address displayed (0.0.0.0), proceed with the next step.
6. If there is more than one unit on the list, please, select the required unit.
7. Click the «+» button in the ERConsole application and a new window will appear.
8. In the new task window, set the additional IP-address and network mask, then click «OK».



**Figure - Adding a new IP address**

9. Turn off and on the InfiNet unit. Wait for about 30 seconds until the "Complete" sign appears.
10. Add an IP-address from the same network subnet to your PC and access the unit. ERConsole will not show newly assigned IP-address.
11. Login to the unit using the new IP-address. Do not reboot the unit now because the IP-address added by ERConsole is temporary until the new configuration has been saved.

## Restore to factory default settings using ERConsole

If you need to restore your unit to the factory default settings, follow the instructions below:



### NOTE

If the management of the unit is lost due to unknown user name or password it can be restored using factory password. Put an serial number of device in the "User name" field and factory password in the "Password" field. User's PC and InfiNet unit should belong to the same subnet.

1. Obtain the IP-address of the unit using the ERConsole as described in the section above.
2. Click on the «+» button in the ERConsole application and a new window will appear.
3. Obtain the Factory Password. In order to do this, please contact the distributor through whom the device was purchased, or in case purchasing the unit directly in InfiNet Wireless, send a request to the InfiNet Technical support to [support@infinetwireless.com](mailto:support@infinetwireless.com). The request must include the device serial number and the value of "Sequence" field (if it's non-zero).
4. Select "Reset configuration" option and enter the Factory Password obtained at the previous step in the "Factory password" field, then click «OK». The password must be entered the same format as it has been got it from the distributor or IW support (with the gaps).

The screenshot shows a 'New task' dialog box. It has a title bar with a close button. The dialog contains the following fields and controls:

- Serial:** A text box containing '501817'.
- Command:** Two radio buttons. The first is 'Up interface' (unselected). The second is 'Reset configuration' (selected).
- IP address:** An empty text box.
- Mask:** An empty text box.
- Factory password:** A text box containing '7h e1 0i p9 09 h6 dr 4v s1 r5 bv y6 n0'.
- Buttons:** 'OK' and 'Cancel' buttons at the bottom right.

Figure - Reset configuration

5. Turn off and on the unit and then wait for about 30 seconds until the "Complete" sign appears.
6. The unit will start in special emergency mode with the IP-address 10.10.10.1 and mask 255.255.255.0.
7. Login to the unit and use "Restore Factory Settings" button on the "Maintenance" page if you use Web GUI or by command "config clear" by CLI to switch off emergency mode.
8. Set new login and password, then save the configuration and restart the unit.