

The wireless link is established, but there is no access to the remote device



Successfully pass the free certification exam at IW Academy and become an Infinet Certified Engineer.

[To the certification exam](#)

- Configuration analysis
 - "Vlan" interfaces
 - Filtering rules
- Checking the switch settings on the remote device
 - Device management
 - Checking the members of the switch group
 - Switch statistics
- Checking the switch settings on the local device
 - Device management
 - Filtering rules

Configuration analysis

In the web interface go to the section "Device status" → "Link statistics on rf6.0 interface", then left-click on the device to which the access is missing. Select "Remote commands".

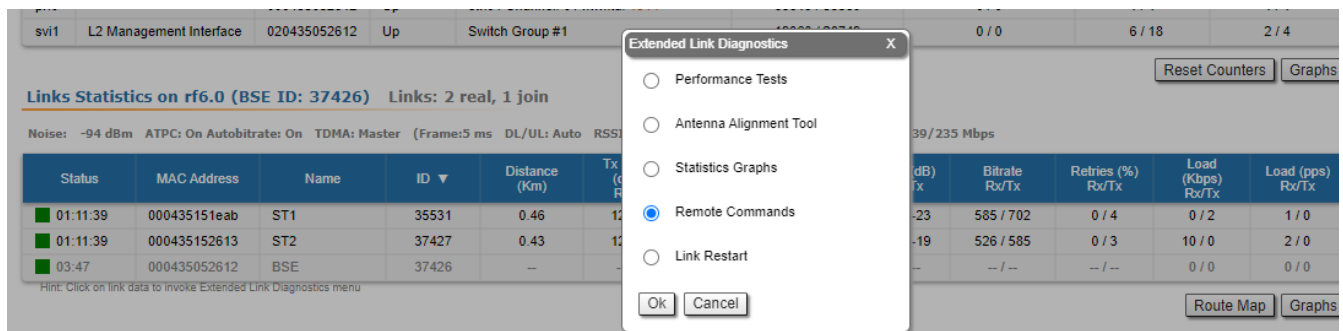


Figure - Remote commands

In the pop-up window enter "config show". If the devices are configured via telnet, access to the remote device can be obtained with the "*mint rf6.0 rcmd*" command.

"Vlan" interfaces

Make sure that the "vlan" interfaces are configured in accordance with the company's security policy (see point 1 in the figure below). The VLAN configuration process using the command line is described in the "[VLAN configuration](#)" article.

Filtering rules

Pay attention to the traffic filtering rules in the switch group and in the "[IP Firewall menu](#)" subsection (point 2).

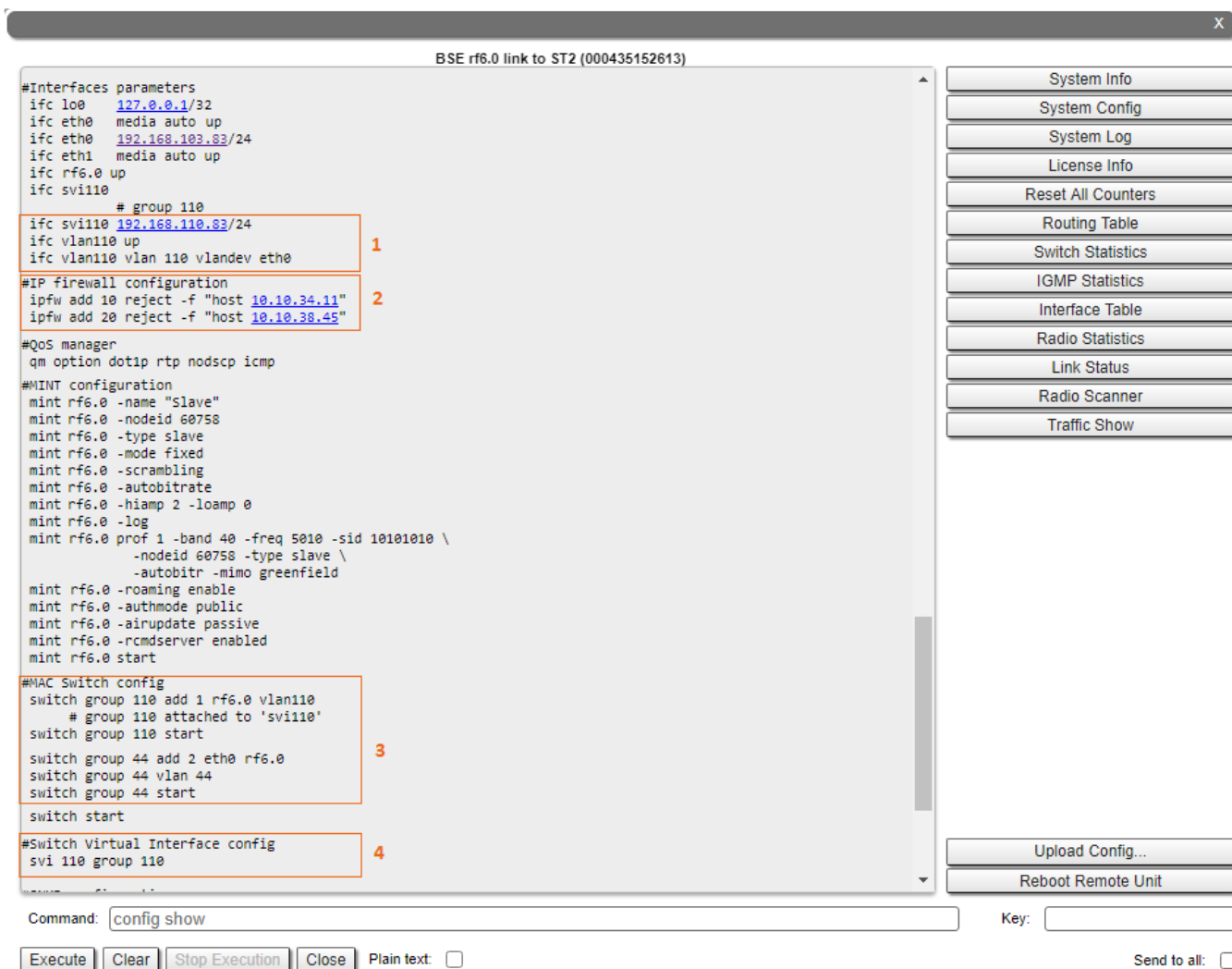


Figure - Display configuration

Checking the switch settings on the remote device

Device management

Make sure that the switch group for the device management is configured correctly (see point 3 in the figure above):

- To access the device via the radio interface, the rf6.0 interface must be added to the management switch group.
- The svi interface must be associated with the switch group. The interface can be associated using the "*svi*" command (point 4).
- The device's management IP address must be assigned to the svi interface using the "*ifconfig*" command (point 1). The switch groups are configured using the "*switch*" command.

Checking the members of the switch group

To display information about the devices included in the switch groups, use the "*mint rf6.0 map swg*" command.

ST1 rf6.0 link to BSE (000435252612)

```
mint rf6.0 map swg

=====
Interface rf6.0  TDM (5 ms DL/UL:Auto) (RSSI=-40 Dist=70)
Node  000435252612  "BSE", Id 37426, Nid 0, (Master)
GROUP 1    : 1 nodes : sent 36043
            (eth0 rf6.0) => svi1
            00043514C93B "BS1"          " 3 hops, Cost 5, (alive 5)

#end
```

Command: Key:

Plain text: ☐ Send to all: ☐

System Info
System Config
System Log
License Info
Reset All Counters
Routing Table
Switch Statistics
IGMP Statistics
Interface Table
Radio Statistics
Link Status
Radio Scanner
Traffic Monitor
Upload Config...
Reboot Remote Unit

Figure - Checking the switch group

Switch statistics

To display statistics about the dropped/blocked MAC addresses for each switch group, use the "[switch statistics](#)" command.

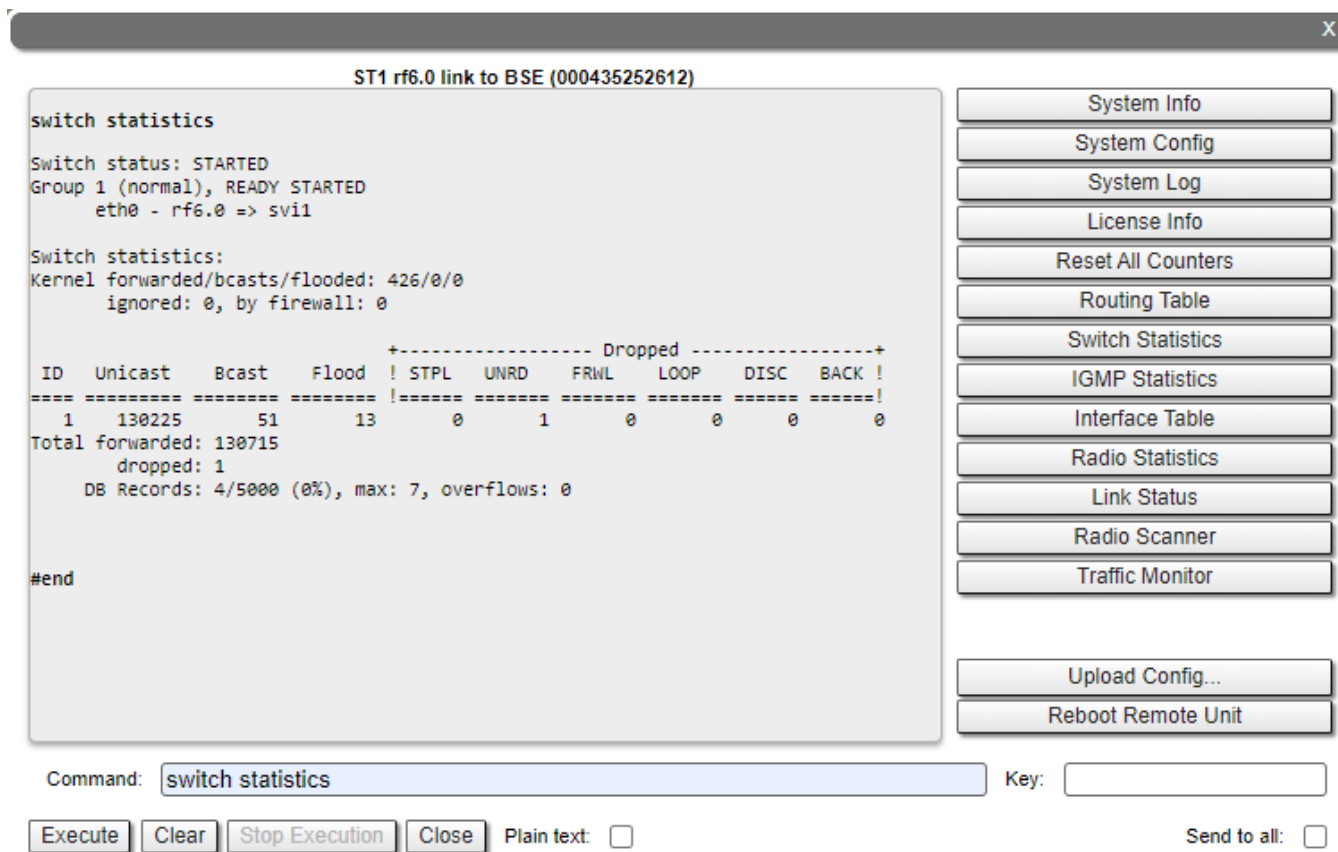


Figure - Switch statistics

Checking the switch settings on the local device

Device management

Make sure that the switch group ID assigned for management on the local device matches with the switch group ID on the remote device. Make sure that the rf6.0 interface has been added to the switch group. The svi interface must be associated with the switch group and its IP address is used for the management of the device. For detailed information about the device management configuration proceed to the ["Remote management of the R5000 units"](#) article.

Filtering rules

Pay attention to the traffic filtering rules in the switch group and in the *"IPFirewall"* subsection. Make sure that the traffic from the remote device is not restricted.